

Guide to Using Your Digital Video Recorder in Stand-Alone Mode



Notice to Installers

The servicing instructions in this notice are for use by qualified service personnel only. To reduce the risk of electric shock, do not perform any servicing other than that contained in the operating instructions, unless you are qualified to do so.

Note to System Installer

For this apparatus, the coaxial cable shield/screen shall be grounded as close as practical to the point of entry of the cable into the building. For products sold in the US and Canada, this reminder is provided to call the system installer's attention to Article 820-93 and Article 820-100 of the NEC (or Canadian Electrical Code Part 1), which provides guidelines for proper grounding of the coaxial cable shield.



This symbol is intended to alert you that uninsulated voltage within this product may have sufficient magnitude to cause electric shock. Therefore, it is dangerous to make any kind of contact with any inside part of this product.

Ce symbole a pour but d'alerter toute personne qu'un contact avec une pièce interne de ce produit, sous tension et non isolée, pourrait être suffisant pour provoquer un choc électrique. Il est donc dangereux d'être en contact avec toute pièce interne de ce produit.



CAUTION: To reduce the risk of electric shock, do not remove cover (or back). No user-serviceable parts inside. Refer servicing to qualified service personnel.

WARNING
TO PREVENT FIRE OR ELECTRIC SHOCK, DO NOT EXPOSE THIS UNIT TO RAIN OR MOISTURE.



This symbol is intended to alert you of the presence of important operating and maintenance (servicing) instructions in the literature accompanying this product.

Ce symbole a pour but de vous avertir qu'une documentation importante sur le fonctionnement et l'entretien accompagne ce produit.

Contents

Important Safety Instructions.....	iv
Welcome!.....	1
Safety First	1
Identify Your DVR	1
Handle With Care – Rules to Remember	2
Equipment You Need to Operate the DVR in Stand-Alone Mode	3
Connecting Your DVR to a TV in a Stand-Alone Environment	4
Sample DVR to TV Connection Diagram	5
Reconnecting Your DVR at Home	6
Compliance Information.....	7

IMPORTANT SAFETY INSTRUCTIONS

Read These Instructions

Keep These Instructions

Heed All Warnings

Follow All Instructions

Power Source Warning

A label on this product indicates the correct power source for this product. Operate this product only from an electrical outlet with the voltage and frequency indicated on the product label. If you are uncertain of the type of power supply to your home or business, consult your service provider or your local power company.

Ground the Product



WARNING:

Avoid electric shock and fire hazard! Do not defeat the safety purpose of the polarized or grounding-type plug. A polarized plug has two blades with one wider than the other. A grounding-type plug has two blades and a third grounding prong. The wide blade or the third prong is provided for your safety. If the provided plug does not fit into your outlet, consult an electrician for replacement of the obsolete outlet.

If this product connects to coaxial cable wiring, be sure the cable system is grounded (earthed). Grounding provides some protection against voltage surges and built-up static charges.

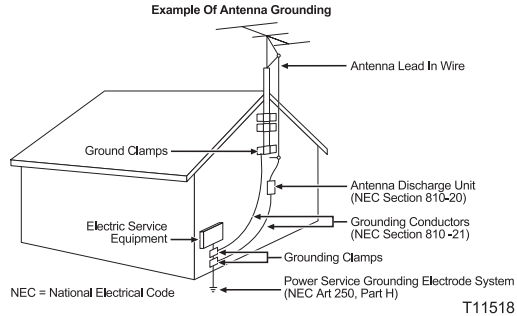
Outdoor Grounding System

If this product connects to an outdoor antenna or cable system, be sure the antenna or cable system is grounded (earthed). This provides some protection against voltage surges and built-up static charges.

Article 810 of the National Electric Code (NEC) ANSI/NFPA No. 70-1990, provides the following information:

- Grounding of the mast and supporting structure
- Grounding the lead-in wire to an antenna discharge unit
- Size of the grounding conductors

- Location of the antenna-discharge unit
- Connection to grounding electrodes
- Requirements for the grounding electrodes (see the following antenna grounding diagram as recommended by NEC ANSI/NFPA 70)



WARNING:

Avoid electric shock and fire hazard! Do not locate an outside antenna system in the vicinity of overhead power lines or power circuits. Touching power lines or circuits might be fatal.

Protect the Product from Lightning

For added protection, unplug this apparatus during lightning storms or when unused for long periods of time. In addition to disconnecting the AC power from the wall outlet, disconnect the signal inputs.

Verify the Power Source from the On/Off Power Light

When the on/off power light is not illuminated, the apparatus may still be connected to the power source. The light goes out when the apparatus is turned off, regardless of whether it is still plugged into an AC power source.

Eliminate AC Mains Overloads



WARNING:

Avoid electric shock and fire hazard! Do not overload AC mains, outlets, extension cords, or integral convenience receptacles. For products that require battery power or other power sources to operate them, refer to the operating instructions for those products.

IMPORTANT SAFETY INSTRUCTIONS, continued

Prevent Power Cord Damage

Protect the power cord from being walked on or pinched, particularly at plugs, convenience receptacles, and the point where the cord exits from the apparatus.

Provide Ventilation and Select a Location

- Do not block any ventilation openings. Install in accordance with the manufacturer's instructions.
- Do not place this apparatus on a bed, sofa, rug, or similar surface.
- Do not place this apparatus on an unstable surface.
- Do not install near any heat sources such as radiators, heat registers, stoves, or other apparatus (including amplifiers) that produce heat.
- Do not install this apparatus in an enclosure, such as a bookcase or rack, unless the installation provides proper ventilation.
- Do not place entertainment devices (such as VCRs or DVDs), lamps, books, vases with liquids, or other objects on top of this product.

Protect from Exposure to Moisture and Foreign Objects

Do not use this apparatus near water.



WARNING:
Avoid electric shock and fire hazard! Do not expose this product to liquids, rain, or moisture.



WARNING:
Avoid electric shock and fire hazard! Unplug this product before cleaning. Clean only with a dry cloth. Do not use a liquid cleaner or an aerosol cleaner. Do not use a magnetic/static cleaning device (dust remover) to clean this product.



WARNING:
Avoid electric shock and fire hazard! Never push objects through the openings in this product. Foreign objects can cause electrical shorts that can result in electric shock or fire.

Accessories Warnings



WARNING:
Avoid electric shock and fire hazard! Only use attachments/accessories specified by your service provider or the manufacturer.

Service Warnings



WARNING:
Avoid electric shock! Do not open the cover of this product. Opening or removing the cover may expose you to dangerous voltages. If you open the cover, your warranty will be void. This product contains no user-serviceable parts. Refer all servicing to qualified service personnel.

Servicing is required when the apparatus has been damaged in any way, such as a power-supply cord or plug is damaged, liquid has been spilled or objects have fallen into the apparatus, the apparatus has been exposed to rain or moisture, does not operate normally, or has been dropped.

Check Product Safety

Upon completion of any service or repairs to this product, the service technician must perform safety checks to determine that this product is in proper operating condition.

Protect the Product when Moving It

Always disconnect the power source when moving the apparatus or connecting or disconnecting cables.



WARNING:
Avoid personal injury and damage to this product! Use only with the cart, stand, tripod, bracket, or table specified by the manufacturer or sold with the apparatus. When a cart is used, use caution when moving the cart/ apparatus combination to avoid injury from tip-over.

20070124 Set-Top Cable US & Canada

Welcome!

Going away for the weekend? Take your Digital Video Recorder (DVR) along - no cable connection required.

Now you can take your recordings with you. All you need is a TV, DVR, remote control, and the cables to connect the DVR to your TV. There's no need for an active cable connection.

Use the instructions in this guide to connect your DVR to a TV in a stand-alone environment and access your recordings. Then, sit back and enjoy watching your recordings stored on the DVR's hard disk!

IMPORTANT! When using your DVR in stand-alone mode, you cannot tune to other channels to watch TV because there is no active cable connection.

For more information about this product, visit our website:

<http://www.cisco.com/web/consumer/support/index.html>

Safety First

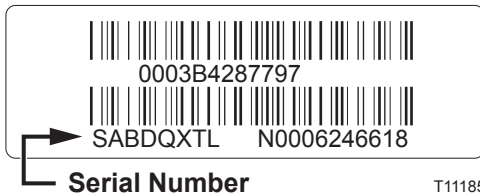
Before using the DVR, read the IMPORTANT SAFETY INSTRUCTIONS section of this guide.

Identify Your DVR

To find the serial number for your DVR, look on the back panel for a label that is similar to the example shown here. The serial number begins with "SA" and is located in the lower left corner of the bar code.

If the DVR requires troubleshooting in the future, your cable service provider may ask for this serial number.

Use the space provided here to record the serial number:



T11185

Handle with Care – Rules to Remember

Before you move your DVR, complete the following steps to properly disconnect and handle the DVR.

Disconnecting the DVR

1. Power off your DVR and TV.
2. Unplug your DVR and TV from the AC power source, and then disconnect the DVR from your TV.
3. Pack your DVR in its original packaging to prepare your DVR for transport.

Transporting the DVR

Your DVR contains a sophisticated hard disk drive that is designed to record and stream digital video. You want to carefully follow the recommended handling guidelines to protect your DVR from damage caused by mishandling.

IMPORTANT! The DVR must be handled with the same level of care you would use when handling other electronics containing hard disk drives, such as computers.

1. Use Protective Packaging When Transporting the DVR

Pack the DVR in its original box before transporting to another location. The hard disk drive in an unpackaged DVR can be damaged from the excessive jarring and vibration that can occur during transportation.

2. Avoid Abrupt Changes in Temperature

Moving a DVR immediately from a cold to a warm location, or vice versa, and then powering it **On** can damage it. Keep the temperature inside your vehicle within about 30°F (about 17°C) of the temperature of your remote location. If, while transporting, you encounter an extreme difference in temperature, then allow one hour before powering **On** the DVR.

3. Allow Time for the Hard Drive to Spin Down After Powering Off the DVR



Always wait for the DVR hard drive heads to spin down (stop) before moving or handling the DVR. Otherwise, the heads and hard disk media can be jarred, broken, or scratched. Follow these steps to allow the drive heads to spin down:

- a) Turn **Off** the DVR unit.
- b) **Unplug** it from the household AC outlet.
- c) **Wait** 10 seconds for the hard disk drive to stop spinning.

Equipment You Need to Operate the DVR in a Stand-Alone Environment

Items are necessary for operating the DVR in stand-alone mode.

1  DVR and Original Packing Materials	2  Power Cord for DVR	3  Remote Control
---	---	---

4  Component Video Cables (YPbPr) (red, green, and blue connectors)	and	 Audio Left/Right Cable (red and white connectors)
--	------------	---

OR

4  HDMI-to-HDMI Cable	or	 RF Coaxial Cable	or	 Composite AV Cables (red, white, and yellow connectors)
--	-----------	--	-----------	---

Note: Use the cable configurations presented here as guidelines for connecting the DVR to your TV. See the sample connection diagrams on page 5 of this guide for more information.

Connecting Your DVR to a TV in a Stand-Alone Environment

To connect your DVR to your entertainment devices, complete these steps.

1. Connect the DVR to your TV using your choice of output (RF, component, composite, S-Video, DVI, HDMI). In the stand-alone environment, you do not need an active coaxial cable input.
2. Plug the DVR and the TV into an AC power source, and then press the **Power** button on the DVR front panel.

Note: It may take several seconds while the DVR reboots.

3. After the DVR reboots, a banner appears on the TV to notify you that the DVR is now ready to play back recordings. Press **C** on the remote or wait several seconds for the banner to disappear automatically.



4. If your TV is a *different* unit from your home TV, you may get a black screen (no video). No video indicates that you need to change the picture format to support your TV. If you do not need to change this picture format, go to step 5. To set the format complete these steps.

- a) With your DVR powered on, press and hold the **Settings** button on the DVR front panel until on the front panel blinks.
- b) Press the **VOL-** key to select a picture format setting. The DVR front panel displays **HdSr**.
- c) In the following table, find the picture formats that your TV supports, then press the corresponding buttons on the DVR front panel.

5. Complete the following steps to watch your recordings:

To select this picture format:	Press this front panel button:	DVR front panel briefly displays:	Then DVR front panel displays:
480i	CH+	480i	SEt
720p	VOL-	720p	SEt
480p	CH-	480p	SEt
1080i	VOL+	1080i	SEt

- a) Press **LIST** on your remote to access the Recorded List screen.
- b) Use the **ARROW** keys on your remote to move through the list of recordings.
- c) Press **SELECT** on your remote to select a recording for playback.

Notes:

- Use your remote to fast-forward, rewind, pause, or stop the recording playback.
- If you have an MCP-100™ HD DVR-DVD, you can play back DVDs and CDs while the DVR is in stand-alone mode.



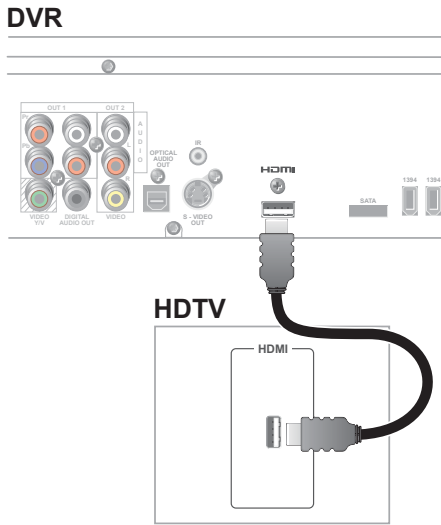
Sample DVR to TV Connection Diagrams

Use the following diagrams as guidelines for connecting the DVR to your high-definition or standard-definition television (HDTV or SDTV). For more information about connectivity and connection diagrams, refer to the connectivity guide for your DVR model and the user's guide for your TV.

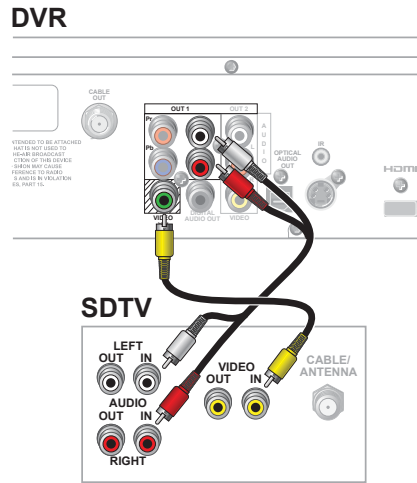


WARNING: Electric shock hazard! Unplug all electronic devices before connecting or disconnecting any device cables to the DVR.

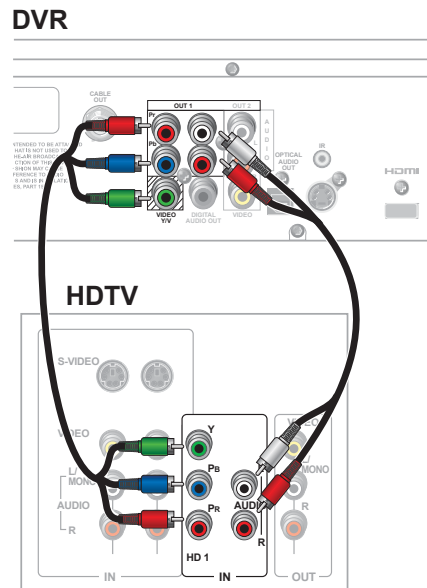
HDTV with HDMI



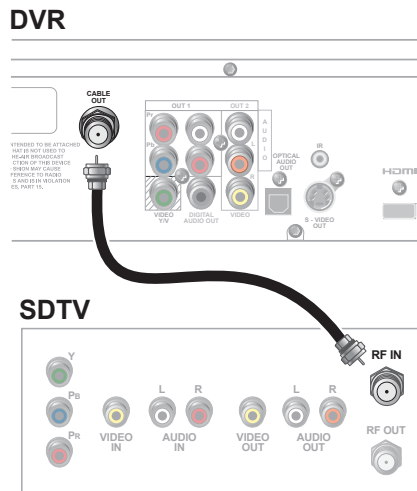
SDTV with Composite



HDTV with Component Input (Y Pb Pr)



SDTV with RF Coaxial



T12416

Reconnecting Your DVR at Home

1. To disconnect and prepare your DVR for transport, read the **Handle with Care – Rules to Remember** section of this guide.
2. At home, follow your normal procedures to reconnect your DVR to your home TV and any other home entertainment devices. For more information about connectivity requirements and connection diagrams, refer to the connectivity guide for your DVR model and the user's guide for your TV.
3. After reconnecting your DVR to the TV, it may take several minutes for your DVR to receive the latest programming from your cable service provider. Wait until you see the current time or four dashes (- - -) on the front panel of the DVR to indicate that the update is complete.

Note: If four dashes are displayed, you must call your cable service provider to get the DVR authorized.

4. If you need to change your TV picture format, refer to step 4 on page 4 for instructions.

FCC Compliance

United States FCC Compliance

This device has been tested and found to comply with the limits for a Class B digital device, pursuant to part 15 of the FCC Rules. These limits are designed to provide reasonable protection against such interference in a residential installation. This equipment generates, uses, and can radiate radio frequency energy. If not installed and used in accordance with the instructions, it may cause harmful interference to radio communications. However, there is no guarantee that interference will not occur in a particular installation. If this equipment does cause harmful interference to radio or television reception, which can be determined by turning the equipment OFF and ON, the user is encouraged to try to correct the interference by one or more of the following measures:

- Reorient or relocate the receiving antenna.
- Increase the separation between the equipment and receiver.
- Connect the equipment into an outlet on a circuit different from that to which the receiver is connected.
- Consult the cable company or an experienced radio/television technician for help.

Any changes or modifications not expressly approved by Cisco Systems, Inc., could void the user's authority to operate the equipment.

The information shown in the FCC Declaration of Conformity paragraph below is a requirement of the FCC and is intended to supply you with information regarding the FCC approval of this device. *The phone numbers listed are for FCC-related questions only and not intended for questions regarding the connection or operation for this device. Please contact your cable service provider for any questions you may have regarding the operation or installation of this device.*

FCC Declaration of Conformity

This device complies with Part 15 of FCC Rules. Operation is subject to the following two conditions:
1) the device may not cause harmful interference, and
2) the device must accept any interference received, including interference that may cause undesired operation.

Explorer® Digital Video Recorder:
Models: 8000, 8000HD, 8240, 8240C,
8240HD, 8240HDC, 8300, 8300C,
8300HD, 8300HDC, MCP-100
Manufactured by: Cisco Systems, Inc.;
5030 Sugarloaf Parkway;
Lawrenceville, Georgia 30044; USA
Telephone **678 277-1120**

Canada EMI Regulation

This Class B digital apparatus complies with Canadian ICES-003.

Cet appareil numérique de la class B est conforme à la norme NMB-003 du Canada.

20060628 FCC w/out VoIP

Software and Firmware Use

Cisco Systems, Inc. owns copyrights to the software included in your set-top and furnishes the software to your cable service provider under a license agreement. You may only use or copy this software in accordance with the terms of your cable service provider.

Cisco Systems, Inc. owns copyrights to the firmware in this equipment. You may only use the firmware in the equipment in which it is provided. Any reproduction or distribution of this firmware, or any portion of it, without the express written consent of Cisco Systems, Inc. is prohibited.

Disclaimer

Cisco Systems, Inc. assumes no responsibility for errors or omissions that may appear in this guide. Cisco Systems, Inc. reserves the right to change this guide at any time without notice.



Cisco Systems, Inc.
5030 Sugarloaf Parkway, Box 465447
Lawrenceville, GA 30042

678.277.1120

www.cisco.com

Cisco and the Cisco Logo are trademarks of Cisco Systems, Inc. and/or its affiliates in the U.S. and other countries. To view a list of Cisco trademarks, go to this URL: www.cisco.com/go/trademarks.

HDMI, the HDMI logo, and High-Definition Multimedia Interface are trademarks or registered trademarks of HDMI Licensing LLC.

Other third party trademarks mentioned are the property of their respective owners.

The use of the word partner does not imply a partnership relationship between Cisco and any other company. (1007R)

© 2007, 2010, 2012 Cisco and/or its affiliates. All rights reserved.

August 2012

Printed in United States of America

Part Number 4011416 Rev C