

This installation guide covers MX200 G2 with a wheel base.

Dimensions

Height: 1480 mm / 58.3 in.

Width: 995 mm / 39.2 in.

Depth: 715 mm / 28.0 in.

Weight total: 33 kg / 73 lb

Weight monitor: 24 kg / 53 lb

Manpower



Two people working together are required to mount the monitor to the base module.

Room setup

Explore the Cisco Project Workplace website to find inspiration and guidelines when preparing your office or meeting room for video conferencing, <http://www.cisco.com/go/projectworkplace>



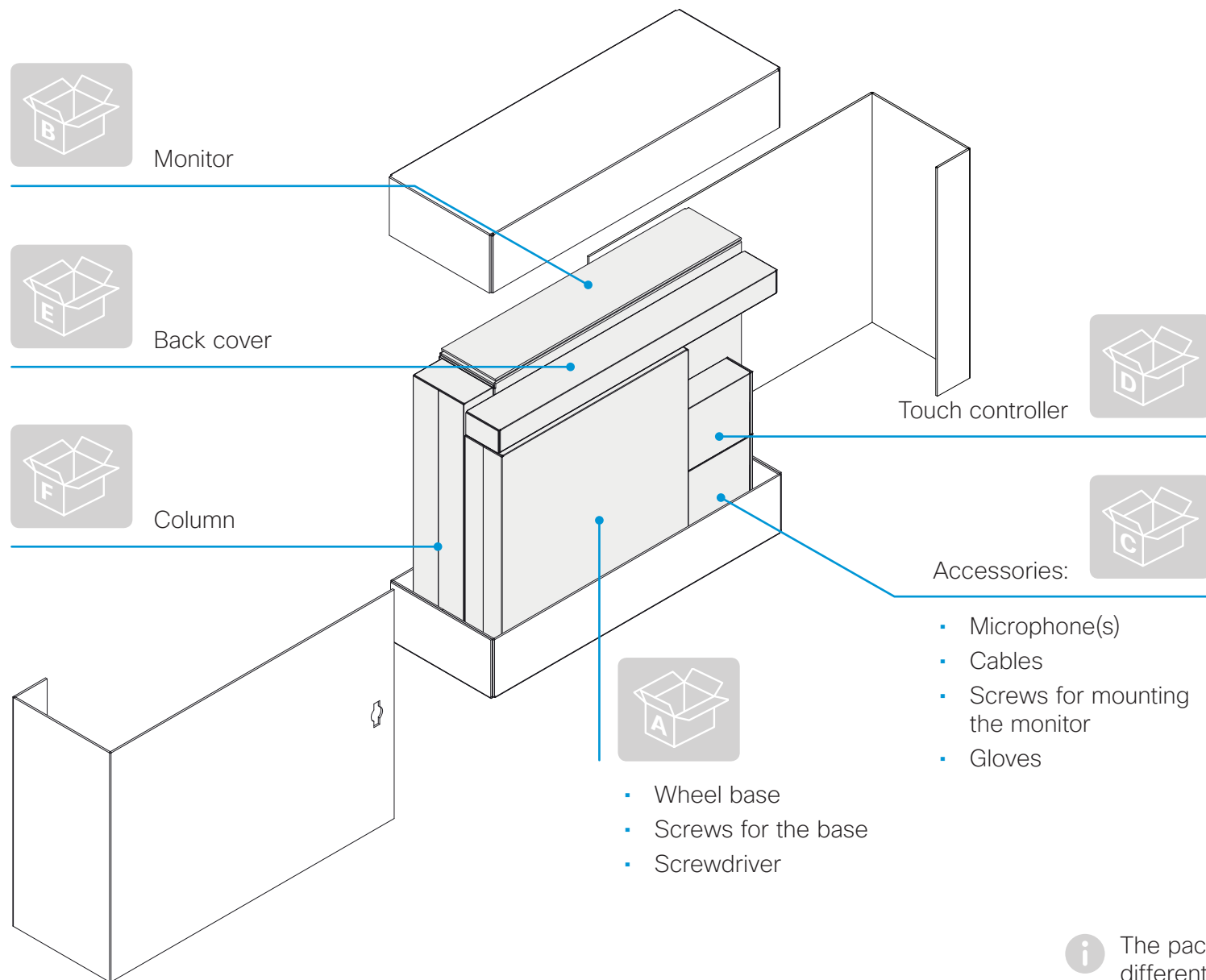
Documentation


Cisco Spark: Visit the Cisco Spark help site to find more information about Spark registered room systems, <http://help.ciscospark.com>



Other services: Visit the Cisco web site to find user guides and compliance and safety information for the video system, <http://www.cisco.com/go/mx-docs>

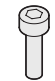


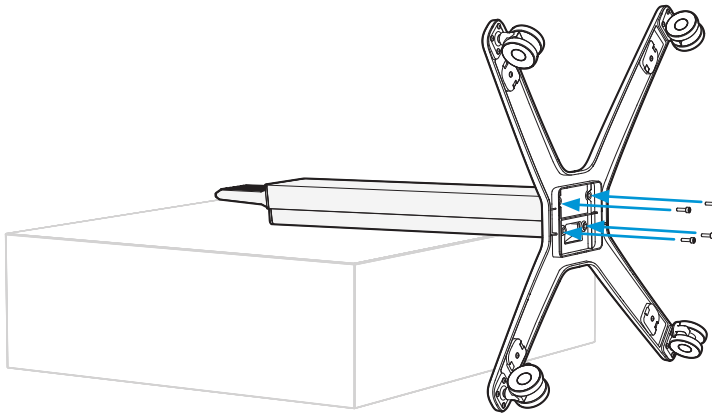


 The packaging may be slightly different for some shipments.

1 Mount the wheel base



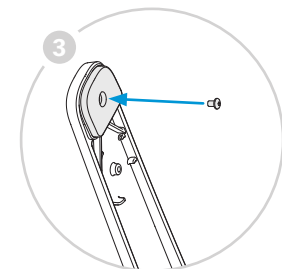
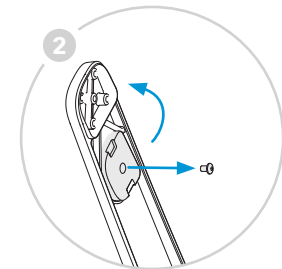
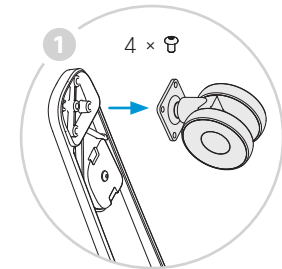
 4 × M6x20



Optional

It is possible to replace the wheels with rubber pads. The rubber pads are kept underneath the wheel base, and must be moved to their correct position.

 M5x8 (Allen key, 3 mm)



2 Mount the monitor

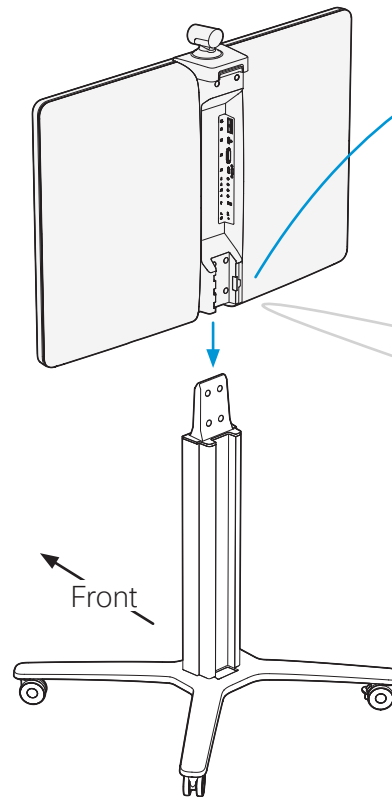
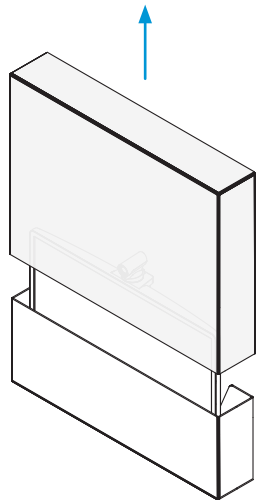


x2

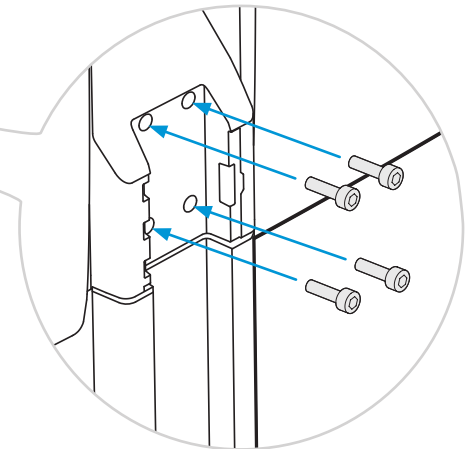
Use gloves when handling the monitor.



4 × M6x16

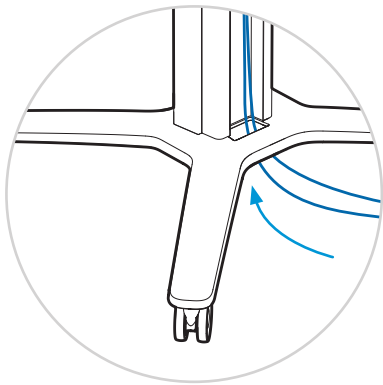


Remove the cable channel lid for now. You need it in step 4.



The monitor may be tilting slightly forward. If you gently pull it to a vertical position, the screws enter more easily.

3 Connect the cables



Thread the cables up through the hole in the base.

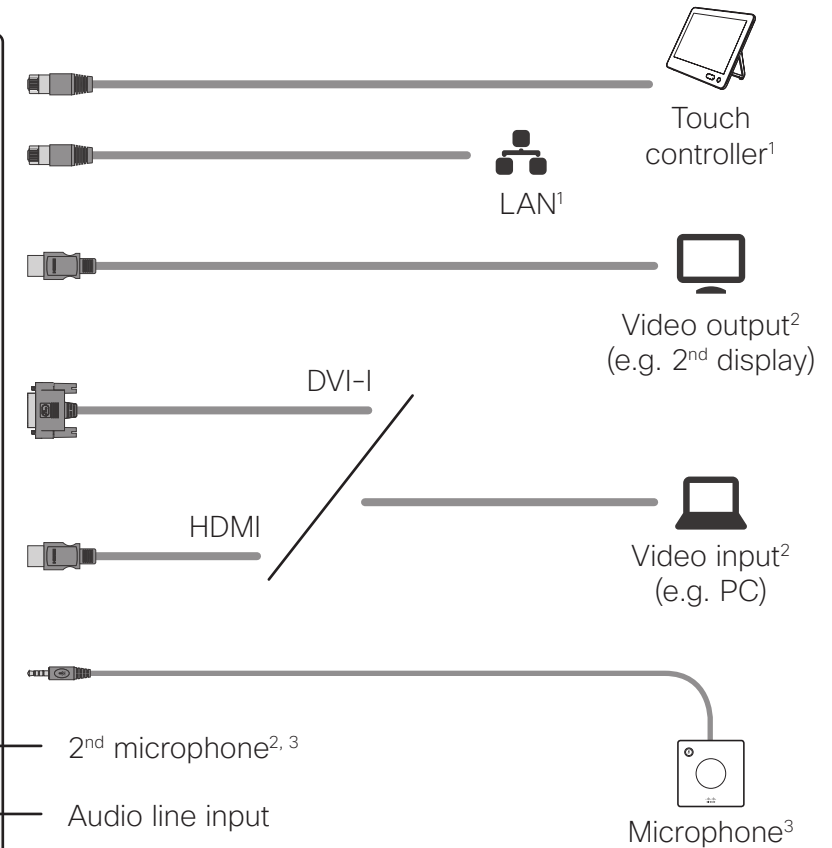
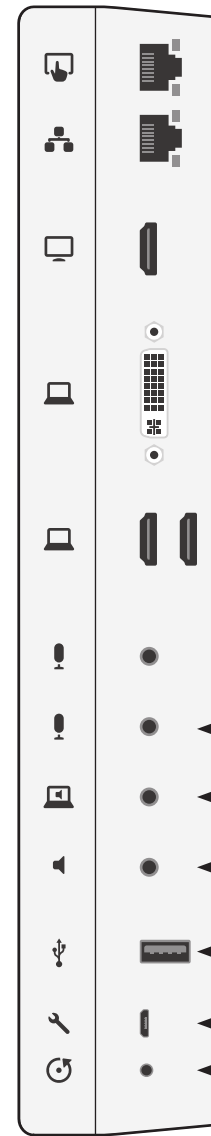
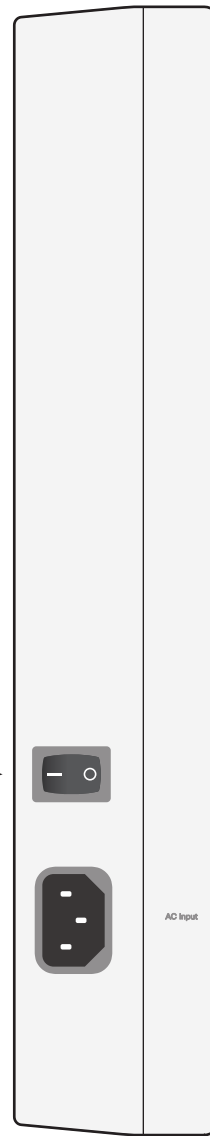
Power switch →

Power (100-240 VAC, 50/60 Hz)



Always use the provided power cable.

The wall socket outlet must be easily accessible after installation.



2nd microphone^{2, 3}

Audio line input

Audio line output

USB, for future use

For maintenance only

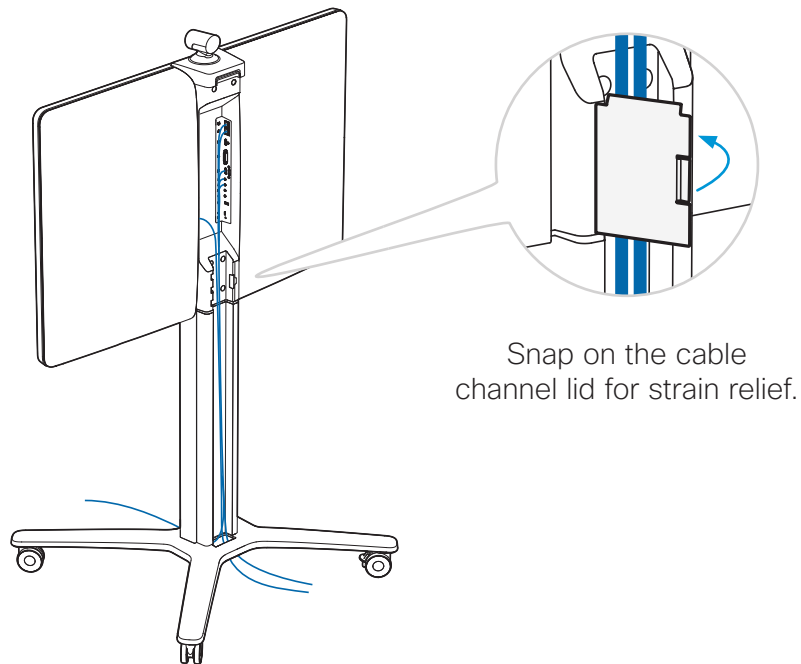
Reset to factory settings

¹ Use the cable that is labeled with for the Touch controller; use the cable that is labeled with for the LAN

² Optional

³ Always use the provided Cisco TelePresence Table Microphone 20

4 Snap on the cable channel lid



Lead the cables out at the front or back as appropriate.

5 Start up the system

- Connect to power and LAN/Ethernet.
- Switch on the system. The power switch is placed next to the power connector at the rear side of the system.



Wait while the unit starts up. Normally this takes a few minutes. It may include automatic software upgrade and restart of the Touch controller.

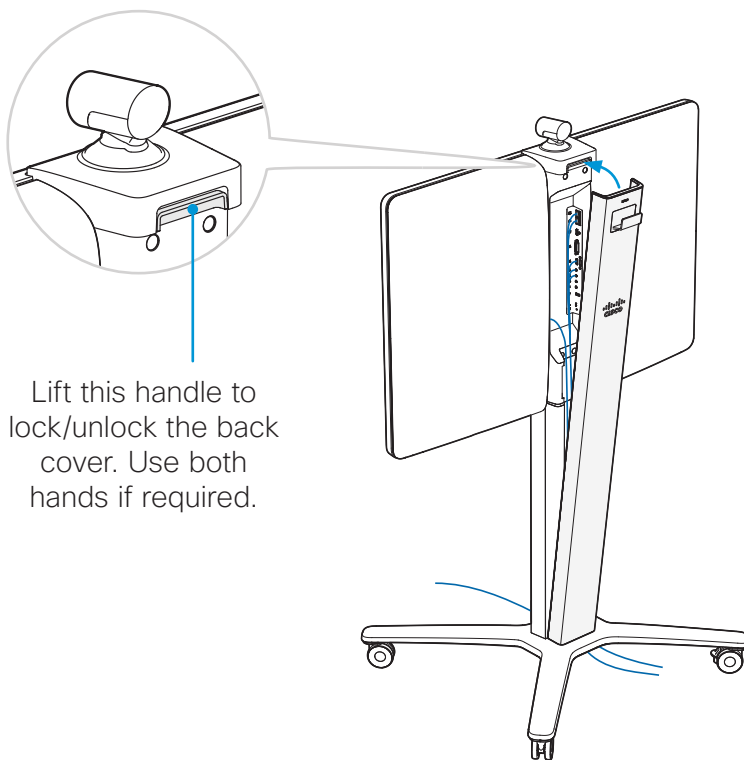
- Follow the instructions on the Touch controller.
Cisco Spark: To find more information on how to get started with Spark registered systems, visit <http://help.ciscospark.com> and look for Getting Started articles for room systems.

Other services: For further information on set-up and configuration, download the *Getting Started Guide* from the Cisco web site, <http://www.cisco.com/go/mx-docs>

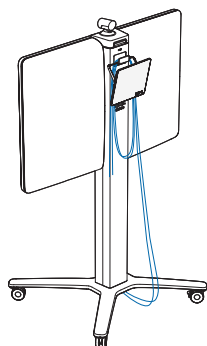


Never move the camera manually when power is switched on; always use the camera control function on the Touch controller to change the camera position.

6 Mount the back cover



Lift this handle to lock/unlock the back cover. Use both hands if required.



Wind up the cables on the hook on the back cover when rolling the unit. Also hang the Touch controller on the hook.

EMC Class A declaration

WARNING: This is a class A product. In a domestic environment this product may cause radio interference in which case the user may be required to take adequate measures.

声明

此为A级产品，在生活环境中，该产品可能会造成无线电干扰。在这种情况下，可能需要用户对其干扰采取切实可行的措施。

Cisco has more than 200 offices worldwide.
Find an overview of the offices on the Cisco web site at
<http://www.cisco.com/go/offices>

Cisco and the Cisco logo are trademarks or registered trademarks of Cisco and/or its affiliates in the U.S. and other countries. To view a list of Cisco trademarks, go to this URL: www.cisco.com/go/trademarks. Third-party trademarks mentioned are the property of their respective owners. The use of the word partner does not imply a partnership relationship between Cisco and any other company. (1110R)