

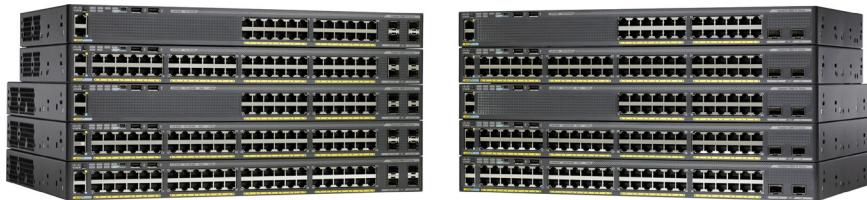
Cisco Catalyst 2960-X Series Switches

Cisco Catalyst 2960-X Switches: Enterprise Ready



The Cisco® Catalyst® 2960-X Series Switches (Figure 1) are stackable fixed configuration Gigabit Ethernet (10/100/1000) switches offering network connectivity for enterprise, midmarket, and branch locations. They enable reliable and secure business operations with lower total cost of ownership through a range of innovative features, including Cisco FlexStack-Plus, application visibility and control, Power over Ethernet Plus (PoE+), innovative power management, and Smart Operations.

Figure 1. Cisco Catalyst 2960-X Series Switches



The Cisco Catalyst 2960-X models provide Layer 2 switching and have one fixed power supply with an external redundant power supply. They provide 24 or 48 Gigabit Ethernet wire rate ports, PoE/PoE+ support, and four 1G Small Form-Factor Pluggable (SFP) or two 10G SFP+ uplinks.

With FlexStack-Plus technology, the Cisco Catalyst 2960-X switches can be stacked up to 8 members with up to 80 Gbps stacking capacity for high scalability.

The Cisco Catalyst 2960-XR models offer all the features of the Cisco Catalyst 2960-X. In addition, they have two field-replaceable redundant power supply modules for power redundancy. They also introduce Layer 3 routing functionality for the first time in the Cisco Catalyst 2960 Series.

Scalable

The Cisco Catalyst 2960-X Series Switches are scalable and resilient. With Cisco FlexStack-Plus stacking, which allows stacking of up to 8 switches and delivers 80 Gbps of stacking bandwidth, the Cisco Catalyst 2960-X enable ease of operation and management with a single configuration across the members of the stack. The Cisco Catalyst 2960-X offer a high-capacity 740W power supply that can power all 48 ports for PoE or 24 ports for PoE+. PoE enables easy and rapid deployment of IP endpoints such as IP phones, access points, and cameras. The Cisco Catalyst 2960-X Series is resilient, with control plane redundancy across FlexStack-Plus switches. This minimizes traffic disruption if any stack member fails.

Figure 2. FlexStack-Plus on Cisco Catalyst 2960-X Series Switches



Smart

The Cisco Catalyst 2960-X Series enable intelligent access services, application visibility and control, and best-in-class energy management.

Build for application visibility and control, these switches support NetFlow-Lite, which can be used to monitor, capture, and record traffic flows through the network.

With industry-leading energy management capabilities such as Cisco EnergyWise to measure and control power usage, Energy Efficient Ethernet (EEE) and Switch and Downlink Hibernation modes to conserve power during periods of inactivity in the network, the Cisco Catalyst 2960-X with up to 80 percent energy savings is the greenest switch in the industry.

The Cisco Catalyst 2960-X Series is SDN ready to enable customers to build applications that automate various services across the campus.

Simple

Cisco Catalyst 2960-X Series Switches are simple to deploy, manage, and troubleshoot. As part of the Cisco Unified Access portfolio, the Cisco Catalyst 2960-X Series Switches are fully integrated with Cisco Prime™ to offer simple operation from a central location.

They can also be managed by Cisco Network Assistant, which features an intuitive GUI where users can easily apply common services across Cisco switches and routers.

The Cisco Catalyst 2960-X makes deployment and ongoing management easy with Cisco Smart Operations, which enable customers to reduce switch installation, configuration, troubleshooting time, and operational costs.

Cisco Smart Install and Configuration are transparent automated technology to configure the Cisco IOS® Software image and switch configuration without user intervention.

Cisco Auto SmartPorts provide automatic Ethernet interface-level configuration as devices connect to the switch port, allowing autodetection and plug and play of the device onto the network. It configures the Ethernet interface port with predefined configurations, including security, quality of service (QoS), and manageability features, with minimal effort and expertise.

Smart Call Home provides proactive diagnostics and remediation of hardware and software issues.

Secure

The Cisco Catalyst 2960-X switches deliver a range of features that secure access to the network and enforce security policies.

These features include flexible authentication with robust 802.1x, SXP Cisco TrustSec® for policy enforcement, role-based security access and control with Cisco ISE and IPv6 First Hop Security. Furthermore, these Cisco switches protect network data confidentiality and integrity with switch port-level encryption.

Investment Protection

Cisco Catalyst 2960-X Series Switches preserve customer investment by allowing mixed stacking with existing Cisco Catalyst 2960-S and 2960-SF switches.

Customers can grow their access networks by adding the new Cisco Catalyst 2960-X switches to their existing Cisco Catalyst 2960-S and 2960-SF stacks.

Warranty Coverage and Technical Service Options

The Cisco Catalyst 2960-X Series Switches come with an enhanced limited lifetime hardware warranty (E-LLW) that includes 90 days of Cisco Technical Assistance Center (TAC) support and next-business-day hardware replacement where available.

For more information about Cisco warranties, visit www.cisco.com/go/warranty.

For information about Cisco Technical Services, visit www.cisco.com/go/ts.

Product Availability

Shipping worldwide, no restrictions.

More Information

For more information about the Cisco Catalyst 2960-X series Switches, visit www.cisco.com/go/2960x

