

# Cisco FS Family of Integrated NAS Devices

## At-A-Glance

### Who Should Consider the Cisco FS Family of Integrated NAS Devices?

Customers that have a large number of file servers or smaller network attached storage (NAS) devices in many different sites should consider the Cisco® FS Family of integrated NAS devices.

The Cisco FS Family (Figure 1), available through select Cisco NAS Advanced Technology Partners, provides enterprises a high-performance and scalable solution for centralizing corporate file storage infrastructure and storage management. It is an ideal complement to Cisco Wide Area File Services (WAFS) Software and helps customers to consolidate not only file storage from data center and campus file servers and smaller NAS devices, but also remote office and branch office file storage. Through consolidation, customers quickly realize cost savings around storage resource management and data protection (backup, replication, compliance).

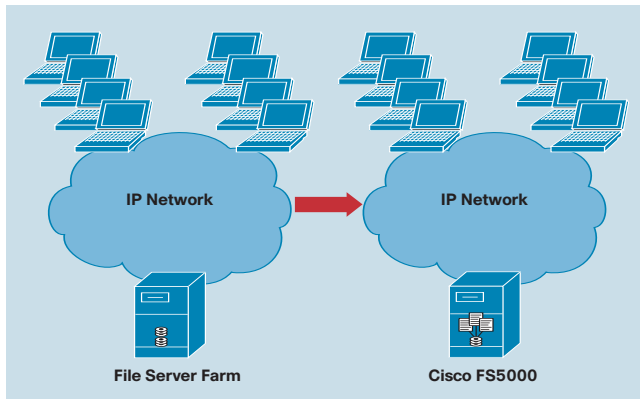
**Figure 1.** Cisco FS5500 and FS7000 Integrated NAS Devices



### Customer Benefits of Cisco FS Family NAS

- **Lower Total Cost of Ownership**
  - Consolidated data center, campus, and remote branch office file storage infrastructure (Figure 2)

**Figure 2.** Cisco FS Family Facilitates File Server Consolidation



- Improved high availability and resiliency for on-demand business
- Flexible deployment of ATA and Fibre Channel drives in the same system
- **Increased Data Protection**
  - Centralized file storage yields less backup management and licenses
  - Less backup hardware, including tape drives, libraries
  - Simplified data protection including replication and regulatory compliance
  - Integration with industry-leading antivirus services
  - SnapSure provides point-in-time snapshot functionality
  - IP Replicator facilitates point-in-time replication to distant Cisco FS Family
- **Reduced Administration**
  - Intuitive administration through Celerra Manager Web GUI
  - Automatic Volume Management (AVM) provides simplified provisioning
  - Integration into existing Windows and UNIX networks and native management tools such as the Microsoft Management Console (MMC)
- **Scalability**
  - Modular architecture using purpose-built components
  - Configurations starting at 1 TB with maximum system capacity of 32 TB
  - Built upon EMC's scalable, proven Clariion architecture

### Enterprise-Class NAS at Mid-Tier Pricing

The Cisco FS Family boasts an enterprise-class data center architecture at a mid-tier price. Some highlights of the Cisco FS Family architecture include:

- Integrated high availability built into the architecture, not “bolted-on”
- Feature-rich storage software to meet demanding enterprise needs
- Industry-leading performance at affordable cost
- Support for multiple protocols—Common Internet File System (CIFS), Network File System (NFS), Small Computer System Interface over IP (iSCSI)—helps enable storage consolidation

### Think Big. Start Small.

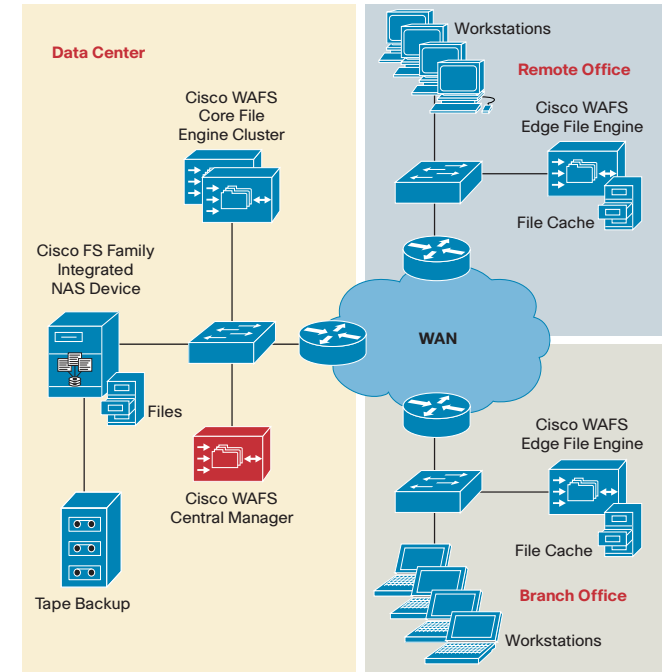
The Cisco FS Family can be minimally configured with a single Data Mover and 1TB of disk capacity and can be expanded to meet storage requirements to a highly available, dual Data Mover configuration and up to 16 TB of Fibre Channel capacity or up to 32 TB of ATA disk capacity.

The Cisco FS Family also supports network availability and performance protocols such as Link Aggregation Control Protocol (LACP), Cisco EtherChannel® technology, FailSafe Networking, and VLANs.

### Cisco FS Family and Cisco WAFS Software End-to-End File Server Consolidation Architecture

The Cisco FS Family integrates with Cisco WAFS software as an intelligent core storage repository for branch office, remote office, data center, and campus user file data (Figure 3).

**Figure 3.** Cisco FS Family and Cisco WAFS Software End-to-End File Server Consolidation Architecture



Low-cost ATA drives can be used to contain file storage centralized from remote offices that have deployed Cisco WAFS Software because the software manages the majority of the workload in the remote office. Cisco WAFS Software provides protocol optimizations and caching to achieve significant file server offload.

The Cisco FS Family integrates into existing Microsoft Windows and UNIX network and file sharing environments. The Cisco FS Virtual Data Mover feature, when coupled with Cisco WAFS Software, allows simplified integration by allowing the Data Mover to take on the personality of the file server from which users are being migrated.

### For More Information

To better understand how this solution can benefit your environment, please contact your local Cisco Systems® account manager to identify a Cisco NAS partner to assist with qualifying your environment. For additional product information, please visit <http://www.cisco.com>.