

# MeetingPlace Web SQL Server 2000 Configuration and Database Creation

Document ID: 50050

---

**Introduction**

**Prerequisites**

Requirements

Components Used

Conventions

**SQL Server 2000 Installation**

**SQL Server 2000 with Windows Authentication Mode**

**Related Information**

---

## Introduction

This document provides the instructions needed to configure the SQL Server 2000 and complete the Cisco MeetingPlace Web database creation.

## Prerequisites

### Requirements

There are no specific requirements for this document.

### Components Used

The information in this document is based on Cisco MeetingPlace Web version 4.1.3.x and later.

The information in this document was created from the devices in a specific lab environment. All of the devices used in this document started with a cleared (default) configuration. If your network is live, make sure that you understand the potential impact of any command.

### Conventions

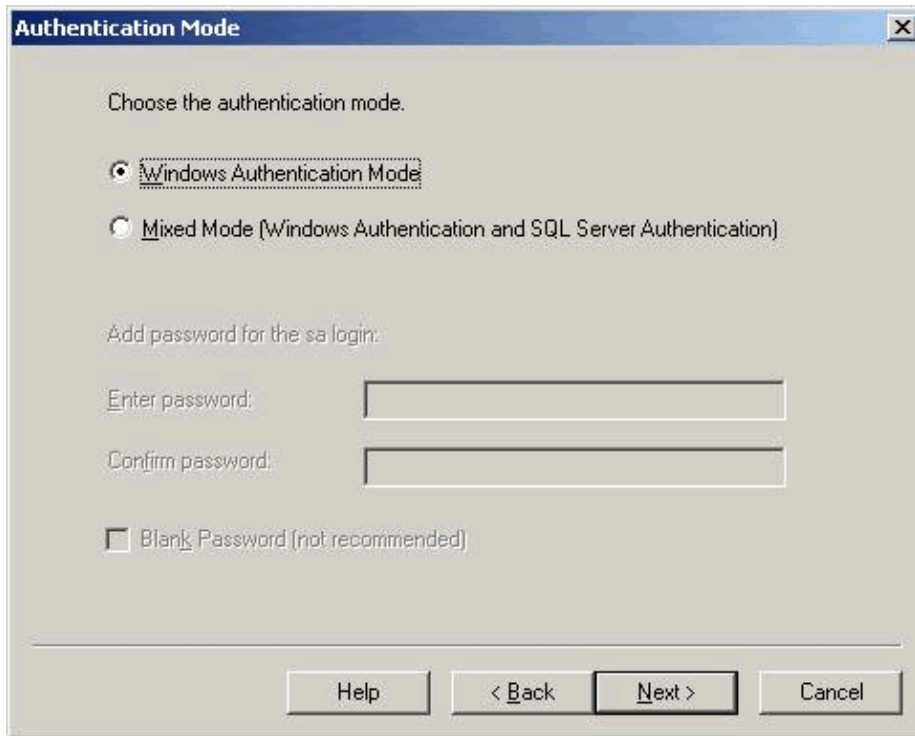
For more information on document conventions, refer to the Cisco Technical Tips Conventions.

## SQL Server 2000 Installation

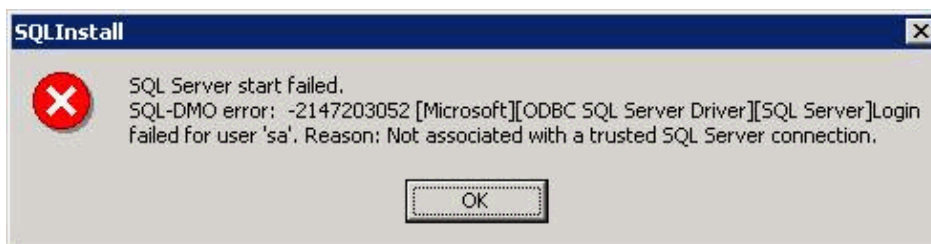
Follow these steps to install the SQL Server 2000.

1. Run the install program.
2. When asked about the Authentication Mode, select **Mixed Mode**. By default, SQL 2000 will have the Windows Authentication Mode selected.

**Note:** During the installation of SQL Server 7.0, you are not asked about an Authentication Mode. SQL Server and Windows NT is selected by default.



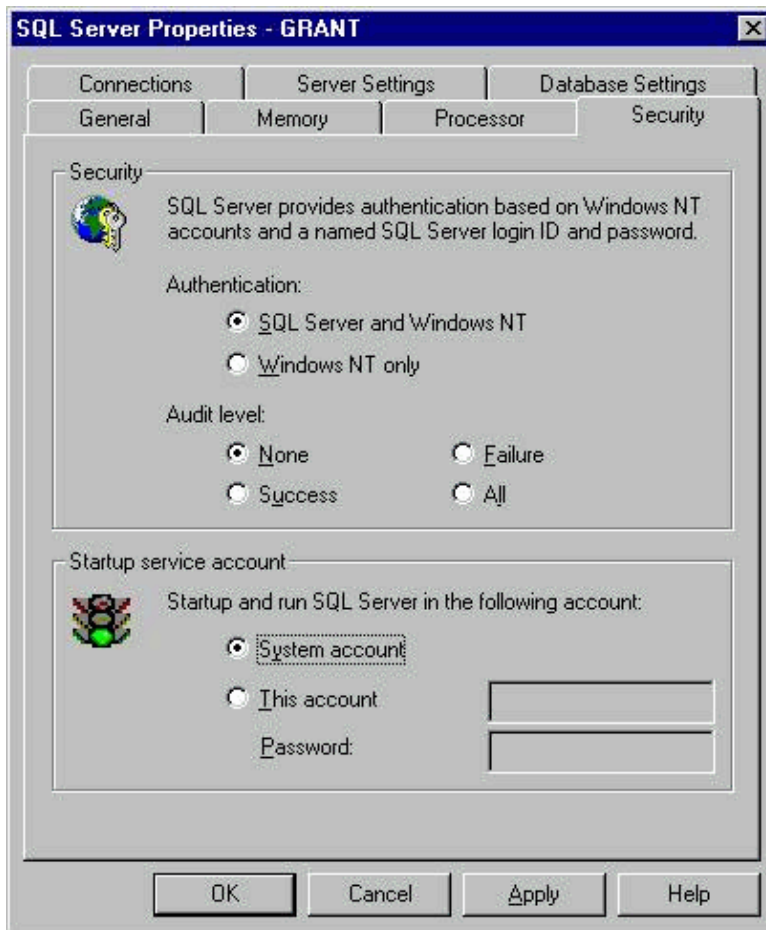
3. If the appropriate Authentication Mode is not selected, you will receive this error when trying to install Cisco MeetingPlace Web and create the MPWEB Database:



## SQL Server 2000 with Windows Authentication Mode

Follow these steps after the SQL Server 2000 is installed with Windows Authentication Mode.

1. Open SQL Enterprise Manager, and go to the server name.
2. Right-click on the server name, choose **Properties**, and click the **Security** tab.



3. In the security section, choose **SQL Server and Windows NT**.
4. Click **Apply**, then **OK**. You will be asked to reboot the SQL server.
5. Reboot the SQL server and then try running sqlinstall.exe again.

---

## Related Information

- [Voice Technology Support](#)
- [Voice and Unified Communications Product Support](#)
- [Recommended Reading: Troubleshooting Cisco IP Telephony](#)
- [Technical Support – Cisco Systems](#)

---

[Contacts & Feedback](#) | [Help](#) | [Site Map](#)

© 2008 – 2009 Cisco Systems, Inc. All rights reserved. [Terms & Conditions](#) | [Privacy Statement](#) | [Cookie Policy](#) | [Trademarks of Cisco Systems, Inc.](#)

---

Updated: Jan 31, 2006

Document ID: 50050

---