

Configuring Cisco VPN Client 3.x for Windows to IOS Using Local Extended Authentication

Document ID: 20621

Introduction

Before You Begin

Conventions

Prerequisites

Components Used

Configure

Network Diagram

Configurations

Enabling Split Tunneling

Verify

Troubleshoot

Client Logs

Related Information

Introduction

This document demonstrates how to configure a connection between a router using local extended authentication and the Cisco VPN Client. Cisco IOS® Software Releases 12.2(15)T2 and greater support connections from Cisco VPN Client 3.x. The VPN Client 3.x uses Diffie Hellman (DH) group 2 policy. The **isakmp policy # group 2** command enables the 3.x clients to connect.

For information on configuring these devices using Cisco Secure VPN Client 1.1, see [Configuring Cisco Secure VPN Client 1.1 for Windows to IOS Using Local Extended Authentication](#).

Refer to [IPsec Tunnel Between IOS Router and Cisco VPN Client 4.x for Windows with TACACS+ User Authentication Configuration Example](#) in order to learn more about the scenario where the user authentication occurs externally with TACACS+ protocol.

Refer to [Configuring IPsec Between a Cisco IOS Router and a Cisco VPN Client 4.x for Windows Using RADIUS for User Authentication](#) in order to learn more about the scenario where the user authentication occurs externally with RADIUS protocol.

Before You Begin

Conventions

For more information on document conventions, see the [Cisco Technical Tips Conventions](#).

Prerequisites

Before attempting this configuration, please ensure that you meet the following prerequisites:

- a pool of addresses to be assigned for IP Security (IPSec)
- a local user on the IOS router with **cisco** as the name and **cisco** as the password
- a group called **3000clients** with password **cisco123**

Components Used

The information in this document is based on the software and hardware versions below.

- a 3640 router running 12.2(15)T2
- Cisco VPN Client for Windows Version 3.5 (any VPN Client 3.x should work)

Output from the **show version** command on the router is shown below.

```
3640#show version
Cisco Internetwork Operating System Software
IOS (tm) 3600 Software (C3640-JK9O3S-M), Version 12.2(15)T2,
  RELEASE SOFTWARE (fc2)
TAC Support: http://www.cisco.com/tac
Copyright (c) 1986-2003 by cisco Systems, Inc.
Compiled Wed 30-Apr-03 05:42 by nmasa
Image text-base: 0x60008950, data-base: 0x6202E000

ROM: System Bootstrap, Version 11.1(20)AA2,
  EARLY DEPLOYMENT RELEASE SOFTWARE (fc1)

3640 uptime is 21 hours, 29 minutes
System returned to ROM by reload
System image file is "flash:c3640-jk9o3s-mz.122-15.T2.bin"
```

This product contains cryptographic features and is subject to United States and local country laws governing import, export, transfer and use. Delivery of Cisco cryptographic products does not imply third-party authority to import, export, distribute or use encryption. Importers, exporters, distributors and users are responsible for compliance with U.S. and local country laws. By using this product you agree to comply with applicable laws and regulations. If you are unable to comply with U.S. and local laws, return this product immediately.

A summary of U.S. laws governing Cisco cryptographic products may be found at:
<http://www.cisco.com/wvl/export/crypto/tool/stqrg.html>

If you require further assistance please contact us by sending email to export@cisco.com.

```
cisco 3640 (R4700) processor (revision 0x00)
  with 126976K/4096K bytes of memory.
Processor board ID 22789386
R4700 CPU at 100Mhz, Implementation 33, Rev 1.0
Bridging software.
X.25 software, Version 3.0.0.
SuperLAT software (copyright 1990 by Meridian Technology Corp).
TN3270 Emulation software.
2 Ethernet/IEEE 802.3 interface(s)
4 Serial network interface(s)
DRAM configuration is 64 bits wide with parity disabled.
125K bytes of non-volatile configuration memory.
32768K bytes of processor board System flash (Read/Write)
16384K bytes of processor board PCMCIA Slot0 flash (Read/Write)

Configuration register is 0x102
```

```
3640#
```

The information presented in this document was created from devices in a specific lab environment. All of the

devices used in this document started with a cleared (default) configuration. If you are working in a live network, ensure that you understand the potential impact of any command before using it.

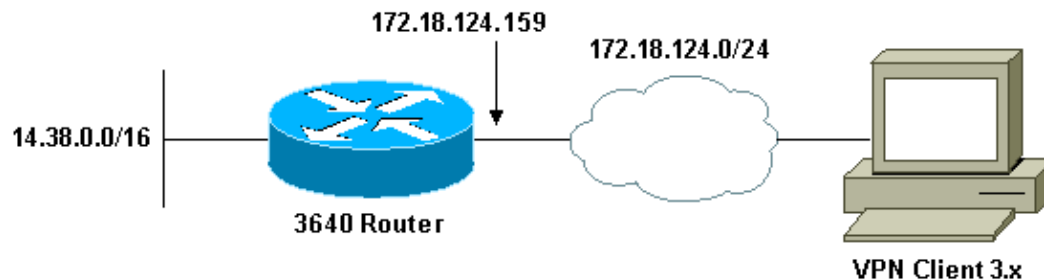
Configure

In this section, you are presented with the information to configure the features described in this document.

Note: To find additional information on the commands used in this document, use the Command Lookup Tool (registered customers only).

Network Diagram

This document uses the network setup shown in the diagram below.



Configurations

This document uses the configurations shown below.

- Configuring the 3640 Router
- Configuring the VPN Client 3.x

Configuring the 3640 Router

```
3640 Router
3640#show run
Building configuration...

Current configuration : 1884 bytes
!
version 12.2
service timestamps debug uptime
service timestamps log uptime
no service password-encryption
!
hostname 3640
!

!--- Enable Authentication, Authorizing and Accounting (AAA)
!--- for user authentication and group authorization.

aaa new-model
!

!--- To enable X-Auth for user authentication,
!--- enable the aaa authentication commands.

aaa authentication login userauthen local
```

```
!--- To enable group authorization,
!--- enable the aaa authorization commands.

aaa authorization network groupauthor local
!

!--- For local authentication of the IPsec user,
!--- create the user with password.

username cisco password 0 cisco
!
ip subnet-zero
!
!
!
ip audit notify log
ip audit po max-events 100
!

!--- Create an Internet Security Association and
!--- Key Management Protocol (ISAKMP) policy for Phase 1 negotiations.

crypto isakmp policy 3
encr 3des
authentication pre-share
group 2
!

!--- Create a group that will be used to specify the
!--- Windows Internet Naming Service (WINS) and
!--- Domain Naming Service (DNS) server addresses to the client,
!--- along with the pre-shared key for authentication.

crypto isakmp client configuration group 3000client
key cisco123
dns 14.1.1.10
wins 14.1.1.20
domain cisco.com
pool ippool
!

!--- Create the Phase 2 Policy for actual data encryption.

crypto ipsec transform-set myset esp-3des esp-sha-hmac
!

!--- Create a dynamic map and
!--- apply the transform set that was created above.

crypto dynamic-map dynmap 10
set transform-set myset
!

!--- Create the actual crypto map,
!--- and apply the aaa lists that were created earlier.

crypto map clientmap client authentication list userauthen
crypto map clientmap isakmp authorization list groupauthor
crypto map clientmap client configuration address respond
crypto map clientmap 10 ipsec-isakmp dynamic dynmap
!
!
fax interface-type fax-mail
mta receive maximum-recipients 0
```

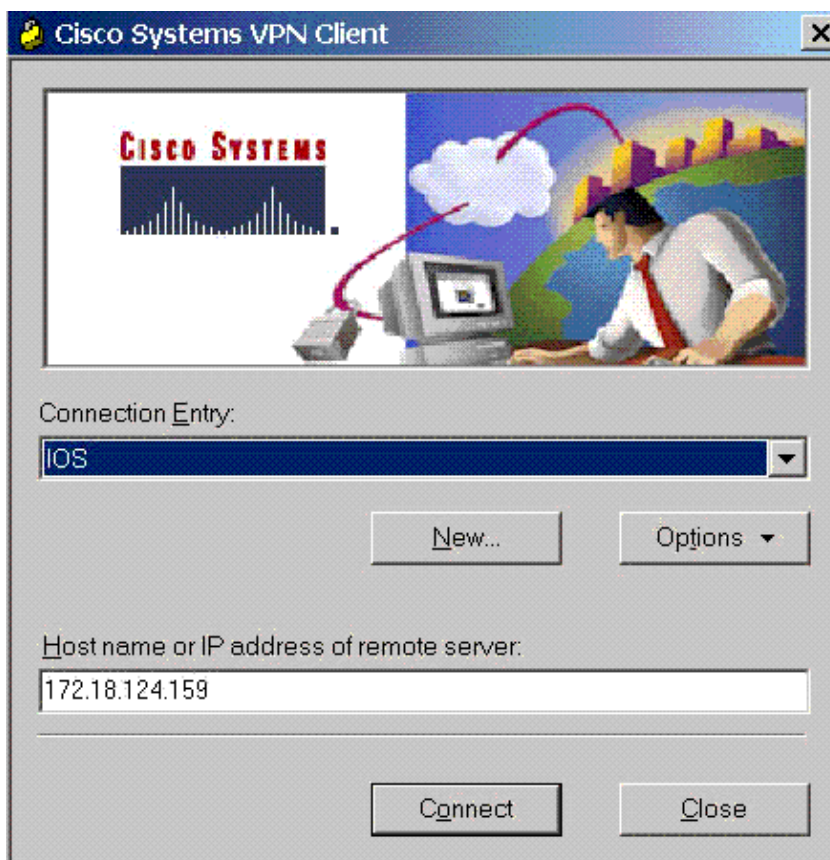
```
!  
!  
!  
  
!--- Apply the crypto map on the outside interface.  
  
interface Ethernet0/0  
  ip address 172.18.124.159 255.255.255.0  
  half-duplex  
  crypto map clientmap  
!  
interface Serial0/0  
  no ip address  
  shutdown  
!  
interface Ethernet0/1  
  ip address 14.38.100.201 255.255.0.0  
  no keepalive  
  half-duplex  
!  
interface Serial1/0  
  no ip address  
  shutdown  
!  
interface Serial1/1  
  no ip address  
  shutdown  
!  
interface Serial1/2  
  no ip address  
  shutdown  
!  
interface Serial1/3  
  no ip address  
  shutdown  
!  
interface Serial1/4  
  no ip address  
  shutdown  
!  
interface Serial1/5  
  no ip address  
  shutdown  
!  
interface Serial1/6  
  no ip address  
  shutdown  
!  
interface Serial1/7  
  no ip address  
  shutdown  
!  
  
!--- Create a pool of addresses to be assigned to the VPN Clients.  
  
ip local pool ippool 14.1.1.100 14.1.1.200  
ip classless  
ip route 0.0.0.0 0.0.0.0 172.18.124.1  
ip http server  
ip pim bidir-enable  
!  
!  
!  
!  
call rsvp-sync  
!
```

```
!  
mgcp profile default  
!  
dial-peer cor custom  
!  
!  
!  
!  
!  
line con 0  
  exec-timeout 0 0  
line aux 0  
line vty 0 4  
!  
!  
end  
  
3640#
```

Configuring the VPN Client 3.x

This section shows how to configure the VPN Client 3.x.

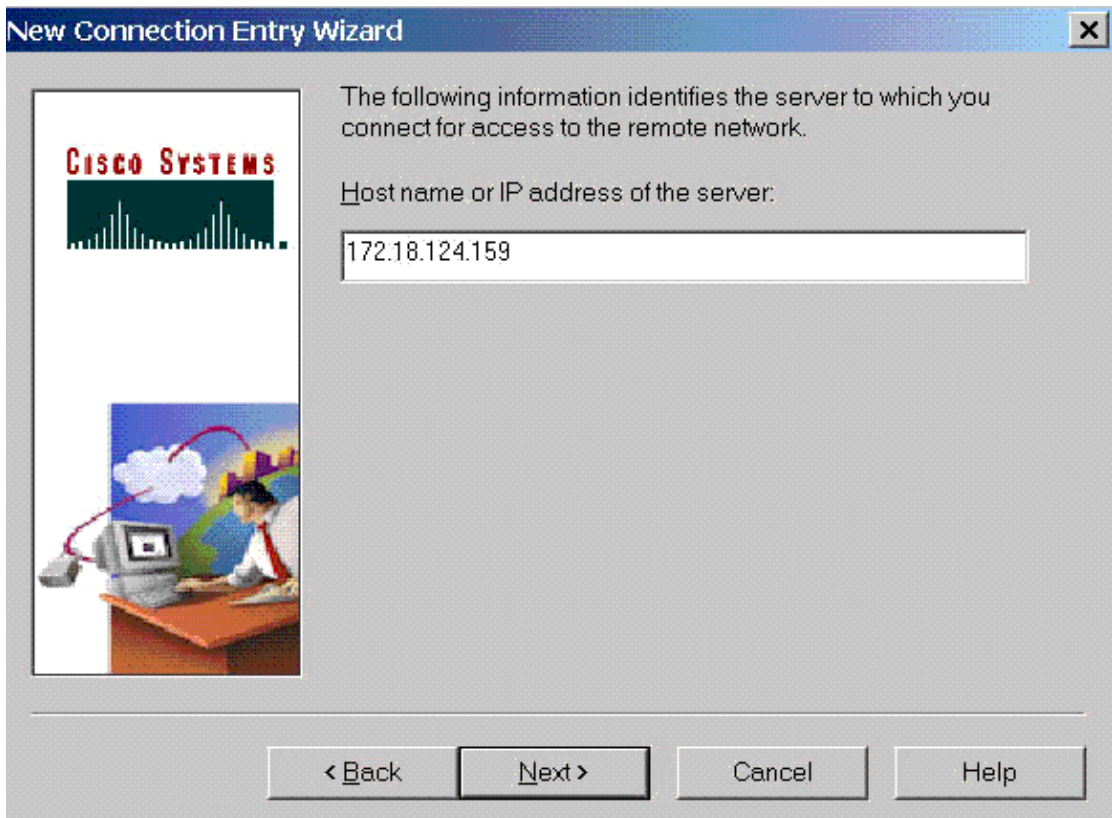
1. Launch the VPN Client, then click **New** to create a new connection.



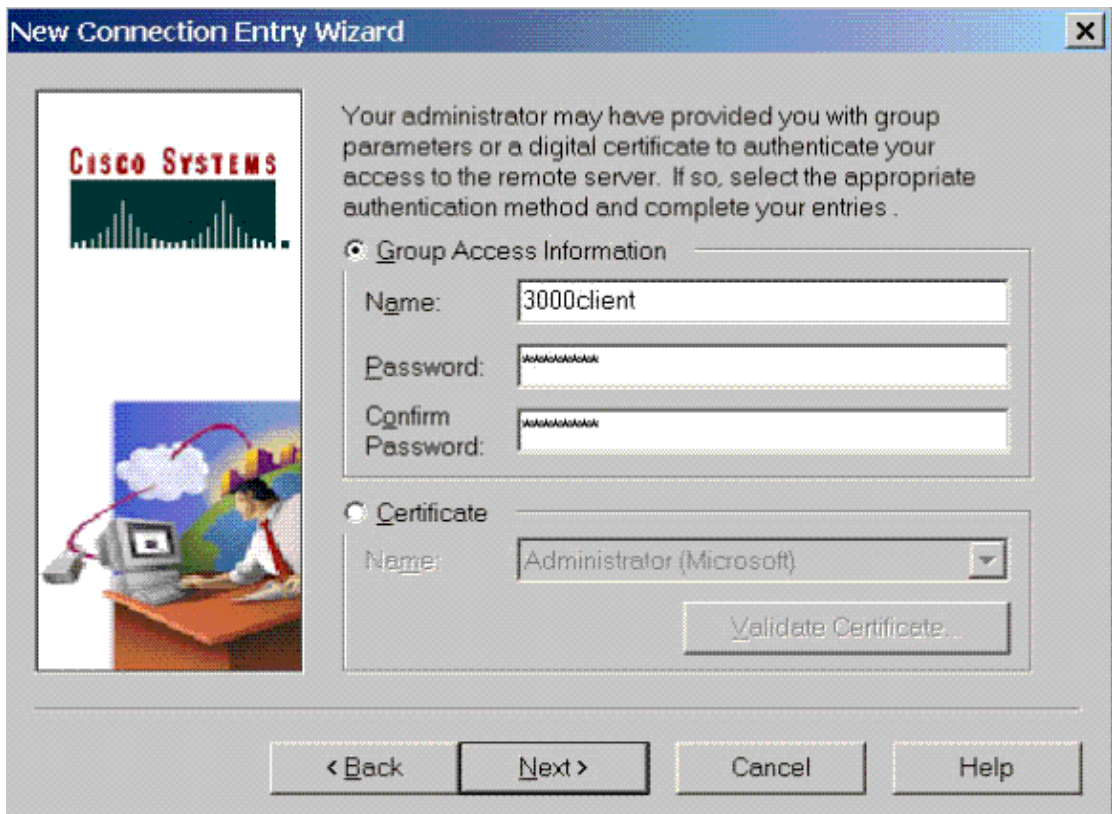
2. When prompted, assign a name to your entry. You can also enter a description if you wish. Click **Next** when you have finished.



3. Enter the IP address of the public interface of the router. Click **Next** when you have finished.



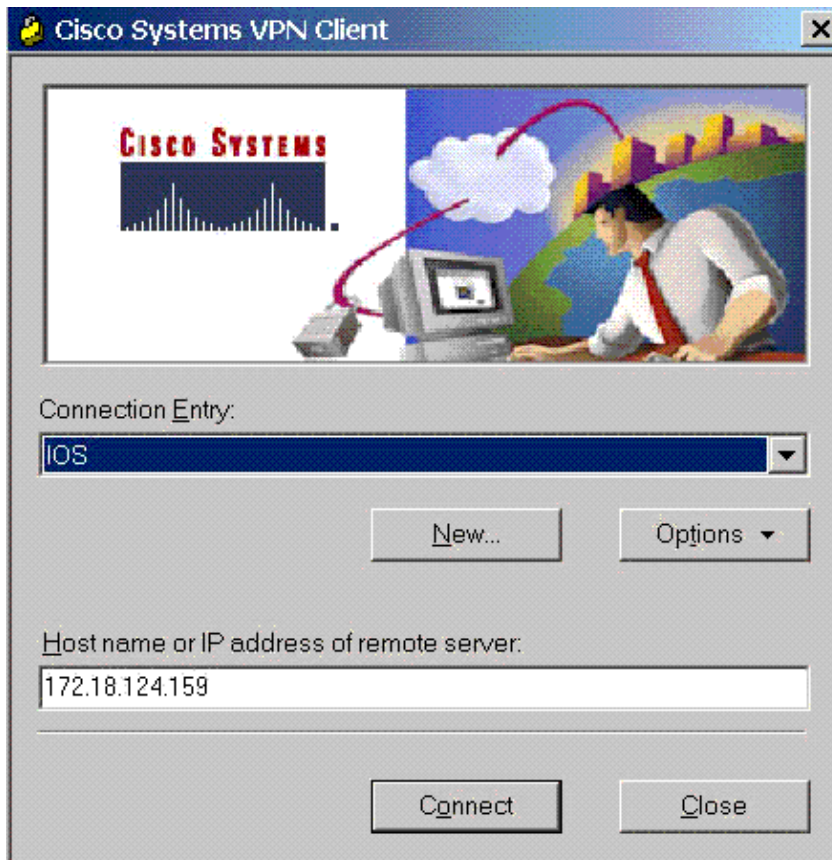
4. Under **Group Access Information**, enter the group name and password. The example below shows a group with the name "3000client" and password "cisco123". Confirm the password, then click **Next** to continue.



5. Click **Finish** to save the profile in the registry.



6. Click **Connect** to connect to the router. The window will display messages reading "Negotiating security profiles" and "Your link is now secure."



Enabling Split Tunneling

To enable split tunneling for the VPN connections, make sure that you have an access list configured on the router. In the example below, the **access-list 108** command is associated with the group for split-tunneling purposes, and the tunnel is formed to the 14.38.X.X /16 network. Traffic flows unencrypted to devices not in access list 108 (for example, the Internet).

```
access-list 108 permit ip 14.38.0.0 0.0.255.255
14.1.1.0 0.0.0.255
```

Then apply the access list on the group properties.

```
crypto isakmp client configuration group 3000client
key cisco123
dns 14.38.100.10
wins 14.38.100.20
domain cisco.com
pool ippool
acl 108
```

Verify

This section provides information you can use to confirm your configuration is working properly.

Certain **show** commands are supported by the Output Interpreter Tool (registered customers only), which allows you to view an analysis of **show** command output.

```
3640#show crypto isakmp sa
dst          src          state      conn-id     slot
172.18.124.159 172.18.124.96 QM_IDLE    3           0
```

```
3640#show crypto ipsec sa
interface: Ethernet0/0
Crypto map tag: clientmap, local addr. 172.18.124.96

protected vrf:
local ident (addr/mask/prot/port): (0.0.0.0/0.0.0.0/0/0)
remote ident (addr/mask/prot/port):
  (14.1.1.106/255.255.255.255/0/0)
current_peer: 172.18.124.159:500
PERMIT, flags={}
#pkts encaps: 6, #pkts encrypt: 6, #pkts digest 6
#pkts decaps: 6, #pkts decrypt: 6, #pkts verify 6
#pkts compressed: 0, #pkts decompressed: 0
#pkts not compressed: 0, #pkts compr. failed: 0
#pkts not decompressed: 0, #pkts decompress failed: 0
#send errors 0, #recv errors 0

local crypto endpt.: 172.18.124.96,
  remote crypto endpt.: 172.18.124.159
path mtu 1500, media mtu 1500
current outbound spi: D026E0BA

inbound esp sas:
spi: 0x84E901C8(2229862856)
transform: esp-3des esp-md5-hmac ,
in use settings ={Tunnel, }
slot: 0, conn id: 2002, flow_id: 3, crypto map: clientmap
sa timing: remaining key lifetime (k/sec): (4450694/3532)
IV size: 8 bytes
replay detection support: Y

inbound ah sas:

inbound pcp sas:

outbound esp sas:
spi: 0xD026E0BA(3492208826)
transform: esp-3des esp-md5-hmac ,
in use settings ={Tunnel, }
slot: 0, conn id: 2003, flow_id: 4, crypto map: clientmap
sa timing: remaining key lifetime (k/sec): (4450699/3532)
IV size: 8 bytes
replay detection support: Y

outbound ah sas:

outbound pcp sas:

protected vrf:
local ident (addr/mask/prot/port):
  (172.18.124.159/255.255.255.255/0/0)
remote ident (addr/mask/prot/port):
  (14.1.1.105/255.255.255.255/0/0)
current_peer: 172.18.124.159:500
PERMIT, flags={}
#pkts encaps: 6, #pkts encrypt: 6, #pkts digest 6
#pkts decaps: 6, #pkts decrypt: 6, #pkts verify 6
#pkts compressed: 0, #pkts decompressed: 0
#pkts not compressed: 0, #pkts compr. failed: 0
#pkts not decompressed: 0, #pkts decompress failed: 0
#send errors 0, #recv errors 0

local crypto endpt.: 172.18.124.159,
  remote crypto endpt.: 172.18.124.96
path mtu 1500, media mtu 1500
current outbound spi: E8E398F8
```

```
inbound esp sas:
spi: 0xDFE24DFC(3756150268)
transform: esp-3des esp-md5-hmac ,
in use settings ={Tunnel, }
slot: 0, conn id: 2000, flow_id: 1, crypto map: clientmap
sa timing: remaining key lifetime (k/sec): (4572253/3530)
IV size: 8 bytes
replay detection support: Y
```

```
inbound ah sas:
```

```
inbound pcsp sas:
```

```
outbound esp sas:
spi: 0xE8E398F8(3907229944)
transform: esp-3des esp-md5-hmac ,
in use settings ={Tunnel, }
slot: 0, conn id: 2001, flow_id: 2, crypto map: clientmap
sa timing: remaining key lifetime (k/sec): (4572253/3528)
IV size: 8 bytes
replay detection support: Y
```

```
outbound ah sas:
```

```
outbound pcsp sas:
```

```
3640#show crypto engine connections active
```

ID	Interface	IP-Address	State	Algorithm	Encrypt	Decrypt
3	Ethernet0/0	172.18.124.159	set	HMAC_MD5+3DES_56_C	0	0
2000	Ethernet0/0	172.18.124.159	set	HMAC_MD5+3DES_56_C	0	6
2001	Ethernet0/0	172.18.124.159	set	HMAC_MD5+3DES_56_C	6	0
2004	Ethernet0/0	172.18.124.159	set	HMAC_MD5+3DES_56_C	0	6
2005	Ethernet0/0	172.18.124.159	set	HMAC_MD5+3DES_56_C	6	0

Troubleshoot

This section provides information you can use to troubleshoot your configuration.

```
3640#debug crypto ipsec
Crypto IPSEC debugging is on
3640#debug crypto isakmp
Crypto ISAKMP debugging is on
3640#
```

```
ISAKMP (0:0): received packet from 172.18.124.96
  dport 500 sport 500 Global (N) NEW SA
ISAKMP: Found a peer struct for 172.18.124.96, peer port 500
ISAKMP: Locking peer struct 0x63B2EAE4, IKE refcount 1 for
  crypto_ikmp_config_initialize_sa
ISAKMP (0:0): (Re)Setting client xauth list and state
ISAKMP: local port 500, remote port 500
ISAKMP: insert sa successfully sa = 63972310
ISAKMP (0:1): processing SA payload. message ID = 0
ISAKMP (0:1): processing ID payload. message ID = 0
ISAKMP (0:1): peer matches *none* of the profiles
ISAKMP (0:1): processing vendor id payload
ISAKMP (0:1): vendor ID seems Unity/DPD but major 215 mismatch
ISAKMP (0:1): vendor ID is XAUTH
ISAKMP (0:1): processing vendor id payload
ISAKMP (0:1): vendor ID is DPD
ISAKMP (0:1): processing vendor id payload
ISAKMP (0:1): vendor ID seems Unity/DPD but major 123 mismatch
```

ISAKMP (0:1): vendor ID is NAT-T v2
ISAKMP (0:1): processing vendor id payload
ISAKMP (0:1): vendor ID seems Unity/DPD but major 194 mismatch
ISAKMP (0:1): processing vendor id payload
ISAKMP (0:1): vendor ID is Unity
ISAKMP (0:1) Authentication by xauth preshared
ISAKMP (0:1): Checking ISAKMP transform 1 against priority 1 policy
ISAKMP: encryption AES-CBC
ISAKMP: hash SHA
ISAKMP: default group 2
ISAKMP: auth XAUTHInitPreShared
ISAKMP: life type in seconds
ISAKMP: life duration (VPI) of 0x0 0x20 0xC4 0x9B
ISAKMP: keylength of 256
ISAKMP (0:1): Encryption algorithm offered does not match policy!
ISAKMP (0:1): atts are not acceptable. Next payload is 3
ISAKMP (0:1): Checking ISAKMP transform 2 against priority 1 policy
ISAKMP: encryption AES-CBC
ISAKMP: hash MD5
ISAKMP: default group 2
ISAKMP: auth XAUTHInitPreShared
ISAKMP: life type in seconds
ISAKMP: life duration (VPI) of 0x0 0x20 0xC4 0x9B
ISAKMP: keylength of 256
ISAKMP (0:1): Encryption algorithm offered does not match policy!
ISAKMP (0:1): atts are not acceptable. Next payload is 3
ISAKMP (0:1): Checking ISAKMP transform 3 against priority 1 policy
ISAKMP: encryption AES-CBC
ISAKMP: hash SHA
ISAKMP: default group 2
ISAKMP: auth pre-share
ISAKMP: life type in seconds
ISAKMP: life duration (VPI) of 0x0 0x20 0xC4 0x9B
ISAKMP: keylength of 256
ISAKMP (0:1): Encryption algorithm offered does not match policy!
ISAKMP (0:1): atts are not acceptable. Next payload is 3
ISAKMP (0:1): Checking ISAKMP transform 4 against priority 1 policy
ISAKMP: encryption AES-CBC
ISAKMP: hash MD5
ISAKMP: default group 2
ISAKMP: auth pre-share
ISAKMP: life type in seconds
ISAKMP: life duration (VPI) of 0x0 0x20 0xC4 0x9B
ISAKMP: keylength of 256
ISAKMP (0:1): Encryh of 128
ISAKMP (0:1): Encryption algorithm offered does not match policy!
ISAKMP (0:1): atts are not acceptable. Next payload is 3
ISAKMP (0:1): Checking ISAKMP transform 7 against priority 1 policy
ISAKMP: encryption AES-CBC
ISAKMP: hash SHA
ISAKMP: default group 2
ISAKMP: auth pre-share
ISAKMP: life type in seconds
ISAKMP: life duration (VPI) of 0x0 0x20 0xC4 0x9B
ISAKMP: keylength of 128
ISAKMP (0:1): Encryption algorithm offered does not match policy!
ISAKMP (0:1): atts are not acceptable. Next payload is 3
ISAKMP (0:1): Checking ISAKMP transform 8 against priority 1 policy
ISAKMP: encryption AES-CBC
ISAKMP: hash MD5
ISAKMP: default group 2
ISAKMP: auth pre-share
ISAKMP: life type in seconds
ISAKMP: life duration (VPI) of 0x0 0x20 0xC4 0x9B
ISAKMP: keylength of 128
ISAKMP (0:1): Encryption algorithm offered does not match policy!

ISAKMP (0:1): atts are not acceptable. Next payload is 3
ISAKMP (0:1): Checking ISAKMP transform 9 against priority 1 policy
ISAKMP: encryption 3DES-CBC
ISAKMP: hash SHA match policy!
ISAKMP (0:1): atts are not acceptable. Next payload is 3
ISAKMP (0:1): Checking ISAKMP transform 5 against priority 1 policy
ISAKMP: encryption AES-CBC
ISAKMP: hash SHA
ISAKMP: default group 2
ISAKMP: auth XAUTHInitPreShared
ISAKMP: life type in seconds
ISAKMP: life duration (VPI) of 0x0 0x20 0xC4 0x9B
ISAKMP: keylength of 128
ISAKMP (0:1): Encryption algorithm offered does not match policy!
ISAKMP (0:1): atts are not acceptable. Next payload is 3
ISAKMP (0:1): Checking ISAKMP transform 6 against priority 1 policy
ISAKMP: encryption AES-CBC
ISAKMP: hash MD5
ISAKMP: default group 2
ISAKMP: auth XAUTHInitPreShared
ISAKMP: life type in seconds
ISAKMP: life duration (VPI) of 0x0 0x20 0xC4 0x9B
ISAKMP: keylength
ISAKMP: default group 2
ISAKMP: auth XAUTHInitPreShared
ISAKMP: life type in seconds
ISAKMP: life duration (VPI) of 0x0 0x20 0xC4 0x9B
ISAKMP (0:1): Encryption algorithm offered does not match policy!
ISAKMP (0:1): atts are not acceptable. Next payload is 3
ISAKMP (0:1): Checking ISAKMP transform 10 against priority 1 policy
ISAKMP: encryption 3DES-CBC
ISAKMP: hash MD5
ISAKMP: default group 2
ISAKMP: auth XAUTHInitPreShared
ISAKMP: life type in seconds
ISAKMP: life duration (VPI) of 0x0 0x20 0xC4 0x9B
ISAKMP (0:1): Encryption algorithm offered does not match policy!
ISAKMP (0:1): atts are not acceptable. Next payload is 3
ISAKMP (0:1): Checking ISAKMP transform 11 against priority 1 policy
ISAKMP: encryption 3DES-CBC
ISAKMP: hash SHA
ISAKMP: default group 2
ISAKMP: auth pre-share
ISAKMP: life type in seconds
ISAKMP: life duration (VPI) of 0x0 0x20 0xC4 0x9B
ISAKMP (0:1): Encryption algorithm offered does not match policy!
ISAKMP (0:1): atts are not acceptable. Next payload is 3
ISAKMP (0:1): Checking ISAKMP transform 12 against priority 1 policy
ISAKMP: encryption 3DES-CBC
ISAKMP: hash MD5
ISAKMP: default group 2
ISAKMP: auth pre-share
ISAKMP: life type in seconds
ISAKMP: life duration (VPI) of 0x0 0x20 0xC4 0x9B
ISAKMP (0:1): Encryption algorithm offered does not match policy!
ISAKMP (0:1): atts are not acceptable. Next payload is 3
ISAKMP (0:1): Checking ISAKMP transform 13 against priority 1 policy
ISAKMP: encryption DES-CBC
ISAKMP: hash MD5
ISAKMP: default group 2
ISAKMP: auth XAUTHInitPreShared
ISAKMP: life type in seconds
ISAKMP: life duration (VPI) of 0x0 0x20 0xC4 0x9B
ISAKMP (0:1): atts are acceptable. Next payload is 3
ISAKMP (0:1): processing KE payload. message ID = 0
ISAKMP (0:1): processing NONCE payload. message ID = 0

```
ISAKMP (0:1): vendor ID is NAT-T v2
ISAKMP (0:1): Input = IKE_MSG_FROM_PEER, IKE_AM_EXCH
ISAKMP (0:1): Old State = IKE_READY New State = IKE_R_AM_AAA_AWAIT
ISAKMP: got callback 1
ISAKMP (0:1): SKEYID state generated
ISAKMP (0:1): constructed NAT-T vendor-02 ID
ISAKMP (0:1): SA is doing pre-shared key authentication
    plus XAUTH using id type ID_IPV4_ADDR
ISAKMP (1): ID payload
next-payload : 10
type : 1
addr : 172.18.124.159
protocol : 17
port : 0
length : 8
ISAKMP (1): Total payload length: 12
ISAKMP (0:1): constructed HIS NAT-D
ISAKMP (0:1): constructed MINE NAT-D
ISAKMP (0:1): sending packet to 172.18.124.96 my_port 500
    peer_port 500 (R) AG_INIT_EXCH
ISAKMP (0:1): Input = IKE_MSG_FROM_AAA, PRESHARED_KEY_REPLY
ISAKMP (0:1): Old State = IKE_R_AM_AAA_AWAIT New State = IKE_R_AM2
ISAKMP (0:1): received packet from 172.18.124.96 dport 500
    sport 500 Global (R) AG_INIT_EXCH
ISAKMP (0:1): processing HASH payload. message ID = 0
ISAKMP (0:1): processing NOTIFY INITIAL_CONTACT protocol 1
spi 0, message ID = 0, sa = 63972310
ISAKMP (0:1): Process initial contact,
bring down existing phase 1 and 2 SA's with local 172.18.124.159
    remote 172.18.124.96 remote port 500
ISAKMP (0:1): returning IP addr to the address pool: 14.1.1.105
ISAKMP (0:1): returning address 14.1.1.105 to pool
ISAKMP:received payload type 17
ISAKMP (0:1): Detected NAT-D payload
ISAKMP (0:1): recalc my hash for NAT-D
ISAKMP (0:1): NAT match MINE hash
ISAKMP:received payload type 17
ISAKMP (0:1): Detected NAT-D payload
ISAKMP (0:1): recalc his hash for NAT-D
ISAKMP (0:1): NAT match HIS hash
ISAKMP (0:1): SA has been authenticated with 172.18.124.96
ISAKMP: set new node 1397605141 to CONF_XAUTH
ISAKMP (0:1): sending packet to 172.18.124.96
    my_port 500 peer_port 500 (R) QM_IDLE
ISAKMP (0:1): purging node 1397605141
ISAKMP: Sending phase 1 responder lifetime 86400
ISAKMP (0:1): peer matches *none* of the profiles
ISAKMP (0:1): Input = IKE_MSG_FROM_PEER, IKE_AM_EXCH
ISAKMP (0:1): Old State = IKE_R_AM2 New State = IKE_P1_COMPLETE
IPSEC(key_engine): got a queue event...
ISAKMP (0:1): Need XAUTH
ISAKMP (0:1): Input = IKE_MSG_INTERNAL, IKE_PHASE1_COMPLETE
ISAKMP (0:1): Old State = IKE_P1_COMPLETE
    New State = IKE_XAUTH_AAA_START_LOGIN_AWAIT
ISAKMP: got callback 1
ISAKMP: set new node 1446280258 to CONF_XAUTH
ISAKMP/xauth: request attribute XAUTH_USER_NAME_V2
ISAKMP/xauth: request attribute XAUTH_USER_PASSWORD_V2
ISAKMP (0:1): initiating peer config to 172.18.124.96. ID = 1446280258
ISAKMP (0:1): sending packet to 172.18.124.96
    my_port 500 peer_port 500 (R) CONF_XAUTH
ISAKMP (0:1): Input = IKE_MSG_FROM_AAA, IKE_AAA_START_LOGIN
ISAKMP (0:1): Old State = IKE_XAUTH_AAA_START_LOGIN_AWAIT
    New State = IKE_XAUTH_REQ_SENT
ISAKMP (0:1): received packet from 172.18.124.96 dport 500
    sport 500 Global (R) CONF_XAUTH
```

ISAKMP (0:1): processing transaction payload from 172.18.124.96.
message ID = 1446280258
ISAKMP: Config payload REPLY
ISAKMP/xauth: reply attribute XAUTH_USER_NAME_V2
ISAKMP/xauth: reply attribute XAUTH_USER_PASSWORD_V2
ISAKMP (0:1): deleting node 1446280258 error FALSE
reason "done with xauth request/reply exchange"
ISAKMP (0:1): Input = IKE_MSG_FROM_PEER, IKE_CFG_REPLY
ISAKMP (0:1): Old State = IKE_XAUTH_REQ_SENT
New State = IKE_XAUTH_AAA_CONT_LOGIN_AWAIT
ISAKMP: got callback 1
ISAKMP: set new node 117774567 to CONF_XAUTH
ISAKMP (0:1): initiating peer config to 172.18.124.96.
ID = 117774567
ISAKMP (0:1): sending packet to 172.18.124.96 my_port 500
peer_port 500 (R) CONF_XAUTH
ISAKMP (0:1): Input = IKE_MSG_FROM_AAA, IKE_AAA_CONT_LOGIN
ISAKMP (0:1): Old State = IKE_XAUTH_AAA_CONT_LOGIN_AWAIT
New State = IKE_XAUTH_SET_SENT
ISAKMP (0:1): received packet from 172.18.124.96 dport 500
sport 500 Global (R) CONF_XAUTH
ISAKMP (0:1): processing transaction payload from 172.18.124.96.
message ID = 117774567
ISAKMP: Config payload ACK
ISAKMP (0:1): XAUTH ACK Processed
ISAKMP (0:1): deleting node 117774567 error FALSE
reason "done with transaction"
ISAKMP (0:1): Input = IKE_MSG_FROM_PEER, IKE_CFG_ACK
ISAKMP (0:1): Old State = IKE_XAUTH_SET_SENT
New State = IKE_P1_COMPLETE
ISAKMP (0:1): Input = IKE_MSG_INTERNAL, IKE_PHASE1_COMPLETE
ISAKMP (0:1): Old State = IKE_P1_COMPLETE
New State = IKE_P1_COMPLETE
ISAKMP (0:1): received packet from 172.18.124.96 dport 500
sport 500 Global (R) QM_IDLE
ISAKMP: set new node 188739171 to QM_IDLE
ISAKMP (0:1): processing transaction payload from 172.18.124.96.
message ID = 188739171
ISAKMP: Config payload REQUEST
ISAKMP (0:1): checking request:
ISAKMP: IP4_ADDRESS
ISAKMP: IP4_NETMASK
ISAKMP: IP4_DNS
ISAKMP: IP4_NBNS
ISAKMP: ADDRESS_EXPIRY
ISAKMP: APPLICATION_VERSION
ISAKMP: UNKNOWN Unknown Attr: 0x7000
ISAKMP: UNKNOWN Unknown Attr: 0x7001
ISAKMP: DEFAULT_DOMAIN
ISAKMP: SPLIT_INCLUDE
ISAKMP: UNKNOWN Unknown Attr: 0x7003
ISAKMP: UNKNOWN Unknown Attr: 0x7007
ISAKMP: UNKNOWN Unknown Attr: 0x7008
ISAKMP: UNKNOWN Unknown Attr: 0x7009
ISAKMP: UNKNOWN Unknown Attr: 0x700A
ISAKMP: UNKNOWN Unknown Attr: 0x7005
ISAKMP (0:1): Input = IKE_MSG_FROM_PEER, IKE_CFG_REQUEST
ISAKMP (0:1): Old State = IKE_P1_COMPLETE
New State = IKE_CONFIG_AUTHOR_AAA_AWAIT
ISAKMP: got callback 1
ISAKMP (0:1): attributes sent in message:
Address: 0.2.0.0
ISAKMP (0:1): allocating address 14.1.1.106
ISAKMP: Sending private address: 14.1.1.106
ISAKMP: Sending IP4_DNS server address: 14.1.1.10
ISAKMP: Sending IP4_NBNS server address: 14.1.1.20

```
ISAKMP: Sending ADDRESS_EXPIRY seconds left to
  use the address: 86396
ISAKMP: Sending APPLICATION_VERSION string: Cisco
  Internetwork Operating System Software
IOS (tm) 3600 Software (C3640-JK9O3S-M), Version 12.2(15)T2,
  RELEASE SOFTWARE (fc2)
TAC Support: http://www.cisco.com/tac
Copyright (c) 1986-2003 by cisco Systems, Inc.
Compiled Wed 30-Apr-03 05:42 by nmasa
ISAKMP (0/1): Unknown Attr: UNKNOWN (0x7000)
ISAKMP (0/1): Unknown Attr: UNKNOWN (0x7001)
ISAKMP: Sending DEFAULT_DOMAIN default domain name: cisco.com
ISAKMP (0/1): Unknown Attr: UNKNOWN (0x7003)
ISAKMP (0/1): Unknown Attr: UNKNOWN (0x7007)
ISAKMP (0/1): Unknown Attr: UNKNOWN (0x7008)
ISAKMP (0/1): Unknown Attr: UNKNOWN (0x7009)
ISAKMP (0/1): Unknown Attr: UNKNOWN (0x700A)
ISAKMP (0/1): Unknown Attr: UNKNOWN (0x7005)
ISAKMP (0:1): responding to peer config from 172.18.124.96.
  ID = 188739171
ISAKMP (0:1): sending packet to 172.18.124.96 my_port 500
  peer_port 500 (R) CONF_ADDR
ISAKMP (0:1): deleting node 188739171 error FALSE reason ""
ISAKMP (0:1): Input = IKE_MSG_FROM_AAA, IKE_AAA_GROUP_ATTR
ISAKMP (0:1): Old State = IKE_CONFIG_AUTHOR_AAA_AWAIT
  New State = IKE_P1_COMPLETE
ISAKMP (0:1): received packet from 172.18.124.96 dport 500
  sport 500 Global (R) QM_IDLE
ISAKMP: set new node -1836135476 to QM_IDLE
ISAKMP (0:1): processing HASH payload. message ID = -1836135476
ISAKMP (0:1): processing SA payload. message ID = -1836135476
ISAKMP (0:1): Checking IPsec proposal 1
ISAKMP: transform 1, ESP_AES
ISAKMP: attributes in transform:
ISAKMP: authenticator is HMAC-MD5
ISAKMP: encaps is 1
ISAKMP: key length is 256
ISAKMP: SA life type in seconds
ISAKMP: SA life duration (VPI) of 0x0 0x20 0xC4 0x9B
ISAKMP (0:1): atts are acceptable.
ISAKMP (0:1): Checking IPsec proposal 1
ISAKMP (0:1): transform 1, IPPCP LZS
ISAKMP: attributes in transform:
ISAKMP: encaps is 1
ISAKMP: SA life type in seconds
ISAKMP: SA life duration (VPI) of 0x0 0x20 0xC4 0x9B
ISAKMP (0:1): atts are acceptable.
IPSEC(validate_proposal_request): proposal part #1,
(key eng. msg.) INBOUND local= 172.18.124.159, remote= 172.18.124.96,
local_proxy= 172.18.124.159/255.255.255.255/0/0 (type=1),
remote_proxy= 14.1.1.106/255.255.255.255/0/0 (type=1),
protocol= ESP, transform= esp-aes 256 esp-md5-hmac ,
lifedur= 0s and 0kb,
spi= 0x0(0), conn_id= 0, keysize= 256, flags= 0x2
IPSEC(validate_proposal_request): proposal part #2,
(key eng. msg.) INBOUND local= 172.18.124.159, remote= 172.18.124.96,
local_proxy= 172.18.124.159/255.255.255.255/0/0 (type=1),
remote_proxy= 14.1.1.106/255.255.255.255/0/0 (type=1),
protocol= PCP, transform= comp-lzs ,
lifedur= 0s and 0kb,
spi= 0x0(0), conn_id= 0, keysize= 0, flags= 0x2
IPSEC(kei_proxy): head = clientmap, map->ivrf = , kei->ivrf =
IPSEC(validate_transform_proposal): transform proposal
  not supported for identity:
{esp-aes 256 esp-md5-hmac comp-lzs }
ISAKMP (0:1): IPsec policy invalidated proposal
```

```
ISAKMP (0:1): Checking IPSec proposal 2
ISAKMP: transform 1, ESP_AES
ISAKMP: attributes in transform:
ISAKMP: authenticator is HMAC-SHA
ISAKMP: encaps is 1
ISAKMP: key length is 256
ISAKMP: SA life type in seconds
ISAKMP: SA life duration (VPI) of 0x0 0x20 0xC4 0x9B
ISAKMP (0:1): atts are acceptable.
ISAKMP (0:1): Checking IPSec proposal 2
ISAKMP (0:1): transform 1, IPPCP LZS
ISAKMP: attributes in transform:
ISAKMP: encaps is 1
ISAKMP: SA life type in seconds
ISAKMP: SA life duration (VPI) of 0x0 0x20 0xC4 0x9B
ISAKMP (0:1): atts are acceptable.
IPSEC(validate_proposal_request): proposal part #1,
(key eng. msg.) INBOUND local= 172.18.124.159, remote= 172.18.124.96,
local_proxy= 172.18.124.159/255.255.255.255/0/0 (type=1),
remote_proxy= 14.1.1.106/255.255.255.255/0/0 (type=1),
protocol= ESP, transform= esp-aes 256 esp-sha-hmac ,
lifedur= 0s and 0kb,
spi= 0x0(0), conn_id= 0, keysize= 256, flags= 0x2
IPSEC(validate_proposal_request): proposal part #2,
(key eng. msg.) INBOUND local= 172.18.124.159, remote= 172.18.124.96,
local_proxy= 172.18.124.159/255.255.255.255/0/0 (type=1),
remote_proxy= 14.1.1.106/255.255.255.255/0/0 (type=1),
protocol= PCP, transform= comp-lzs ,
lifedur= 0s and 0kb,
spi= 0x0(0), conn_id= 0, keysize= 0, flags= 0x2
IPSEC(kei_proxy): head = clientmap, map->ivrf = , kei->ivrf =
IPSEC(validate_transform_proposal): transform proposal
  not supported for identity:
  {esp-aes 256 esp-sha-hmac comp-lzs }
ISAKMP (0:1): IPSec policy invalidated proposal
ISAKMP (0:1): Checking IPSec proposal 3
ISAKMP: transform 1, ESP_AES
ISAKMP: attributes in transform:
ISAKMP: authenticator is HMAC-MD5
ISAKMP: encaps is 1
ISAKMP: key length is 128
ISAKMP: SA life type in seconds
ISAKMP: SA life duration (VPI) of 0x0 0x20 0xC4 0x9B
ISAKMP (0:1): atts are acceptable.
ISAKMP (0:1): Checking IPSec proposal 3
ISAKMP (0:1): transform 1, IPPCP LZS
ISAKMP: attributes in transform:
ISAKMP: encaps is 1
ISAKMP: SA life type in seconds
ISAKMP: SA life duration (VPI) of 0x0 0x20 0xC4 0x9B
ISAKMP (0:1): atts are acceptable.
IPSEC(validate_proposal_request): proposal part #1,
(key eng. msg.) INBOUND local= 172.18.124.159, remote= 172.18.124.96,
local_proxy= 172.18.124.159/255.255.255.255/0/0 (type=1),
remote_proxy= 14.1.1.106/255.255.255.255/0/0 (type=1),
protocol= ESP, transform= esp-aes esp-md5-hmac ,
lifedur= 0s and 0kb,
spi= 0x0(0), conn_id= 0, keysize= 128, flags= 0x2
IPSEC(validate_proposal_request): proposal part #2,
(key eng. msg.) INBOUND local= 172.18.124.159, remote= 172.18.124.96,
local_proxy= 172.18.124.159/255.255.255.255/0/0 (type=1),
remote_proxy= 14.1.1.106/255.255.255.255/0/0 (type=1),
protocol= PCP, transform= comp-lzs ,
lifedur= 0s and 0kb,
spi= 0x0(0), conn_id= 0, keysize= 0, flags= 0x2
IPSEC(kei_proxy): head = clientmap, map->ivrf = , kei->ivrf =
```

```
IPSEC(validate_transform_proposal): transform proposal
  not supported for identity:
{esp-aes esp-md5-hmac comp-lzs }
ISAKMP (0:1): IPSec policy invalidated proposal
ISAKMP (0:1): Checking IPSec proposal 4
ISAKMP: transform 1, ESP_AES
ISAKMP: attributes in transform:
ISAKMP: authenticator is HMAC-SHA
ISAKMP: encaps is 1
ISAKMP: key length is 128
ISAKMP: SA life type in seconds
ISAKMP: SA life duration (VPI) of 0x0 0x20 0xC4 0x9B
ISAKMP (0:1): atts are acceptable.
ISAKMP (0:1): Checking IPSec proposal 4
ISAKMP (0:1): transform 1, IPPCP LZS
ISAKMP: attributes in transform:
ISAKMP: encaps is 1
ISAKMP: SA life type in seconds
ISAKMP: SA life duration (VPI) of 0x0 0x20 0xC4 0x9B
ISAKMP (0:1): atts are acceptable.
IPSEC(validate_proposal_request): proposal part #1,
(key eng. msg.) INBOUND local= 172.18.124.159, remote= 172.18.124.96,
local_proxy= 172.18.124.159/255.255.255.255/0/0 (type=1),
remote_proxy= 14.1.1.106/255.255.255.255/0/0 (type=1),
protocol= ESP, transform= esp-aes esp-sha-hmac ,
lifedur= 0s and 0kb,
spi= 0x0(0), conn_id= 0, keysize= 128, flags= 0x2
IPSEC(validate_proposal_request): proposal part #2,
(key eng. msg.) INBOUND local= 172.18.124.159, remote= 172.18.124.96,
local_proxy= 172.18.124.159/255.255.255.255/0/0 (type=1),
remote_proxy= 14.1.1.106/255.255.255.255/0/0 (type=1),
protocol= PCP, transform= comp-lzs ,
lifedur= 0s and 0kb,
spi= 0x0(0), conn_id= 0, keysize= 0, flags= 0x2
IPSEC(kei_proxy): head = clientmap, map->ivrf = , kei->ivrf =
IPSEC(validate_transform_proposal): transform proposal
  not supported for identity:
{esp-aes esp-sha-hmac comp-lzs }
ISAKMP (0:1): IPSec policy invalidated proposal
ISAKMP (0:1): Checking IPSec proposal 5
ISAKMP: transform 1, ESP_AES
ISAKMP: attributes in transform:
ISAKMP: authenticator is HMAC-MD5
ISAKMP: encaps is 1
ISAKMP: key length is 256
ISAKMP: SA life type in seconds
ISAKMP: SA life duration (VPI) of 0x0 0x20 0xC4 0x9B
ISAKMP (0:1): atts are acceptable.
IPSEC(validate_proposal_request): proposal part #1,
(key eng. msg.) INBOUND local= 172.18.124.159, remote= 172.18.124.96,
local_proxy= 172.18.124.159/255.255.255.255/0/0 (type=1),
remote_proxy= 14.1.1.106/255.255.255.255/0/0 (type=1),
protocol= ESP, transform= esp-aes 256 esp-md5-hmac ,
lifedur= 0s and 0kb,
spi= 0x0(0), conn_id= 0, keysize= 256, flags= 0x2
IPSEC(kei_proxy): head = clientmap, map->ivrf = , kei->ivrf =
IPSEC(validate_transform_proposal): transform proposal
  not supported for identity:
{esp-aes 256 esp-md5-hmac }
ISAKMP (0:1): IPSec policy invalidated proposal
ISAKMP (0:1): Checking IPSec proposal 6
ISAKMP: transform 1, ESP_AES
ISAKMP: attributes in transform:
ISAKMP: authenticator is HMAC-SHA
ISAKMP: encaps is 1
ISAKMP: key length is 256
```

```
ISAKMP: SA life type in seconds
ISAKMP: SA life duration (VPI) of 0x0 0x20 0xC4 0x9B
ISAKMP (0:1): atts are acceptable.
IPSEC(validate_proposal_request): proposal part #1,
(key eng. msg.) INBOUND local= 172.18.124.159, remote= 172.18.124.96,
local_proxy= 172.18.124.159/255.255.255.255/0/0 (type=1),
remote_proxy= 14.1.1.106/255.255.255.255/0/0 (type=1),
protocol= ESP, transform= esp-aes 256 esp-sha-hmac ,
lifedur= 0s and 0kb,
spi= 0x0(0), conn_id= 0, keysize= 256, flags= 0x2
IPSEC(kei_proxy): head = clientmap, map->ivrf = , kei->ivrf =
IPSEC(validate_transform_proposal): transform proposal
not supported for identity:
{esp-aes 256 esp-sha-hmac }
ISAKMP (0:1): IPsec policy invalidated proposal
ISAKMP (0:1): Checking IPsec proposal 7
ISAKMP: transform 1, ESP_AES
ISAKMP: attributes in transform:
ISAKMP: authenticator is HMAC-MD5
ISAKMP: encaps is 1
ISAKMP: key length is 128
ISAKMP: SA life type in seconds
ISAKMP: SA life duration (VPI) of 0x0 0x20 0xC4 0x9B
ISAKMP (0:1): atts are acceptable.
IPSEC(validate_proposal_request): proposal part #1,
(key eng. msg.) INBOUND local= 172.18.124.159, remote= 172.18.124.96,
local_proxy= 172.18.124.159/255.255.255.255/0/0 (type=1),
remote_proxy= 14.1.1.106/255.255.255.255/0/0 (type=1),
protocol= ESP, transform= esp-aes esp-md5-hmac ,
lifedur= 0s and 0kb,
spi= 0x0(0), conn_id= 0, keysize= 128, flags= 0x2
IPSEC(kei_proxy): head = clientmap, map->ivrf = , kei->ivrf =
IPSEC(validate_transform_proposal): transform proposal
not supported for identity:
{esp-aes esp-md5-hmac }
ISAKMP (0:1): IPsec policy invalidated proposal
ISAKMP (0:1): Checking IPsec proposal 8
ISAKMP: transform 1, ESP_AES
ISAKMP: attributes in transform:
ISAKMP: authenticator is HMAC-SHA
ISAKMP: encaps is 1
ISAKMP: key length is 128
ISAKMP: SA life type in seconds
ISAKMP: SA life duration (VPI) of 0x0 0x20 0xC4 0x9B
ISAKMP (0:1): atts are acceptable.
IPSEC(validate_proposal_request): proposal part #1,
(key eng. msg.) INBOUND local= 172.18.124.159, remote= 172.18.124.96,
local_proxy= 172.18.124.159/255.255.255.255/0/0 (type=1),
remote_proxy= 14.1.1.106/255.255.255.255/0/0 (type=1),
protocol= ESP, transform= esp-aes esp-sha-hmac ,
lifedur= 0s and 0kb,
spi= 0x0(0), conn_id= 0, keysize= 128, flags= 0x2
IPSEC(kei_proxy): head = clientmap, map->ivrf = , kei->ivrf =
IPSEC(validate_transform_proposal): transform proposal
not supported for identity:
{esp-aes esp-sha-hmac }
ISAKMP (0:1): IPsec policy invalidated proposal
ISAKMP (0:1): Checking IPsec proposal 9
ISAKMP: transform 1, ESP_3DES
ISAKMP: attributes in transform:
ISAKMP: authenticator is HMAC-MD5
ISAKMP: encaps is 1
ISAKMP: SA life type in seconds
ISAKMP: SA life duration (VPI) of 0x0 0x20 0xC4 0x9B
ISAKMP (0:1): atts are acceptable.
ISAKMP (0:1): Checking IPsec proposal 9
```

```
ISAKMP (0:1): transform 1, IPPCP LZS
ISAKMP: attributes in transform:
ISAKMP: encaps is 1
ISAKMP: SA life type in seconds
ISAKMP: SA life duration (VPI) of 0x0 0x20 0xC4 0x9B
ISAKMP (0:1): atts are acceptable.
IPSEC(validate_proposal_request): proposal part #1,
(key eng. msg.) INBOUND local= 172.18.124.159, remote= 172.18.124.96,
local_proxy= 172.18.124.159/255.255.255.255/0/0 (type=1),
remote_proxy= 14.1.1.106/255.255.255.255/0/0 (type=1),
protocol= ESP, transform= esp-3des esp-md5-hmac ,
lifedur= 0s and 0kb,
spi= 0x0(0), conn_id= 0, keysize= 0, flags= 0x2
IPSEC(validate_proposal_request): proposal part #2,
(key eng. msg.) INBOUND local= 172.18.124.159, remote= 172.18.124.96,
local_proxy= 172.18.124.159/255.255.255.255/0/0 (type=1),
remote_proxy= 14.1.1.106/255.255.255.255/0/0 (type=1),
protocol= PCP, transform= comp-lzs ,
lifedur= 0s and 0kb,
spi= 0x0(0), conn_id= 0, keysize= 0, flags= 0x2
IPSEC(kei_proxy): head = clientmap, map->ivrf = , kei->ivrf =
IPSEC(validate_transform_proposal): transform proposal
not supported for identity:
{esp-3des esp-md5-hmac comp-lzs }
ISAKMP (0:1): IPSec policy invalidated proposal
ISAKMP (0:1): Checking IPSec proposal 10
ISAKMP: transform 1, ESP_3DES
ISAKMP: attributes in transform:
ISAKMP: authenticator is HMAC-SHA
ISAKMP: encaps is 1
ISAKMP: SA life type in seconds
ISAKMP: SA life duration (VPI) of 0x0 0x20 0xC4 0x9B
ISAKMP (0:1): atts are acceptable.
ISAKMP (0:1): Checking IPSec proposal 10
ISAKMP (0:1): transform 1, IPPCP LZS
ISAKMP: attributes in transform:
ISAKMP: encaps is 1
ISAKMP: SA life type in seconds
ISAKMP: SA life duration (VPI) of 0x0 0x20 0xC4 0x9B
ISAKMP (0:1): atts are acceptable.
IPSEC(validate_proposal_request): proposal part #1,
(key eng. msg.) INBOUND local= 172.18.124.159, remote= 172.18.124.96,
local_proxy= 172.18.124.159/255.255.255.255/0/0 (type=1),
remote_proxy= 14.1.1.106/255.255.255.255/0/0 (type=1),
protocol= ESP, transform= esp-3des esp-sha-hmac ,
lifedur= 0s and 0kb,
spi= 0x0(0), conn_id= 0, keysize= 0, flags= 0x2
IPSEC(validate_proposal_request): proposal part #2,
(key eng. msg.) INBOUND local= 172.18.124.159, remote= 172.18.124.96,
local_proxy= 172.18.124.159/255.255.255.255/0/0 (type=1),
remote_proxy= 14.1.1.106/255.255.255.255/0/0 (type=1),
protocol= PCP, transform= comp-lzs ,
lifedur= 0s and 0kb,
spi= 0x0(0), conn_id= 0, keysize= 0, flags= 0x2
IPSEC(kei_proxy): head = clientmap, map->ivrf = , kei->ivrf =
IPSEC(validate_transform_proposal): transform proposal
not supported for identity:
{esp-3des esp-sha-hmac comp-lzs }
ISAKMP (0:1): IPSec policy invalidated proposal
ISAKMP (0:1): Checking IPSec proposal 11
ISAKMP: transform 1, ESP_3DES
ISAKMP: attributes in transform:
ISAKMP: authenticator is HMAC-MD5
ISAKMP: encaps is 1
ISAKMP: SA life type in seconds
ISAKMP: SA life duration (VPI) of 0x0 0x20 0xC4 0x9B
```

```
ISAKMP (0:1): atts are acceptable.
IPSEC(validate_proposal_request): proposal part #1,
(key eng. msg.) INBOUND local= 172.18.124.159, remote= 172.18.124.96,
local_proxy= 172.18.124.159/255.255.255.255/0/0 (type=1),
remote_proxy= 14.1.1.106/255.255.255.255/0/0 (type=1),
protocol= ESP, transform= esp-3des esp-md5-hmac ,
lifedur= 0s and 0kb,
spi= 0x0(0), conn_id= 0, keysize= 0, flags= 0x2
IPSEC(kei_proxy): head = clientmap, map->ivrf = , kei->ivrf =
ISAKMP (0:1): processing NONCE payload. message ID = -1836135476
ISAKMP (0:1): processing ID payload. message ID = -1836135476
ISAKMP (0:1): processing ID payload. message ID = -1836135476
ISAKMP (0:1): asking for 1 spis from ipsec
ISAKMP (0:1): Node -1836135476, Input = IKE_MSG_FROM_PEER,
IKE_QM_EXCH
ISAKMP (0:1): Old State = IKE_QM_READY
New State = IKE_QM_SPI_STARVE
ISAKMP (0:1): received packet from 172.18.124.96 dport 500
sport 500 Global (R) QM_IDLE
ISAKMP: set new node -1171731793 to QM_IDLE
ISAKMP (0:1): processing HASH payload. message ID = -1171731793
ISAKMP (0:1): processing SA payload. message ID = -1171731793
ISAKMP (0:1): Checking IPsec proposal 1
ISAKMP: transform 1, ESP_AES
ISAKMP: attributes in transform:
ISAKMP: authenticator is HMAC-MD5
ISAKMP: encaps is 1
ISAKMP: key length is 256
ISAKMP: SA life type in seconds
ISAKMP: SA life duration (VPI) of 0x0 0x20 0xC4 0x9B
ISAKMP (0:1): atts are acceptable.
ISAKMP (0:1): Checking IPsec proposal 1
ISAKMP (0:1): transform 1, IPsec LZS
ISAKMP: attributes in transform:
ISAKMP: encaps is 1
ISAKMP: SA life type in seconds
ISAKMP: SA life duration (VPI) of 0x0 0x20 0xC4 0x9B
ISAKMP (0:1): atts are acceptable.
IPSEC(validate_proposal_request): proposal part #1,
(key eng. msg.) INBOUND local= 172.18.124.159, remote= 172.18.124.96,
local_proxy= 0.0.0.0/0.0.0.0/0/0 (type=4),
remote_proxy= 14.1.1.106/255.255.255.255/0/0 (type=1),
protocol= ESP, transform= esp-aes 256 esp-md5-hmac ,
lifedur= 0s and 0kb,
spi= 0x0(0), conn_id= 0, keysize= 256, flags= 0x2
IPSEC(validate_proposal_request): proposal part #2,
(key eng. msg.) INBOUND local= 172.18.124.159, remote= 172.18.124.96,
local_proxy= 0.0.0.0/0.0.0.0/0/0 (type=4),
remote_proxy= 14.1.1.106/255.255.255.255/0/0 (type=1),
protocol= PCP, transform= comp-lzs ,
lifedur= 0s and 0kb,
spi= 0x0(0), conn_id= 0, keysize= 0, flags= 0x2
IPSEC(kei_proxy): head = clientmap, map->ivrf = , kei->ivrf =
IPSEC(validate_transform_proposal): transform proposal
not supported for identity:
{esp-aes 256 esp-md5-hmac comp-lzs }
ISAKMP (0:1): IPsec policy invalidated proposal
ISAKMP (0:1): Checking IPsec proposal 2
ISAKMP: transform 1, ESP_AES
ISAKMP: attributes in transform:
ISAKMP: authenticator is HMAC-SHA
ISAKMP: encaps is 1
ISAKMP: key length is 256
ISAKMP: SA life type in seconds
ISAKMP: SA life duration (VPI) of 0x0 0x20 0xC4 0x9B
ISAKMP (0:1): atts are acceptable.
```

```
ISAKMP (0:1): Checking IPsec proposal 2
ISAKMP (0:1): transform 1, IPPCP LZS
ISAKMP: attributes in transform:
ISAKMP: encaps is 1
ISAKMP: SA life type in seconds
ISAKMP: SA life duration (VPI) of 0x0 0x20 0xC4 0x9B
ISAKMP (0:1): atts are acceptable.
IPSEC(validate_proposal_request): proposal part #1,
(key eng. msg.) INBOUND local= 172.18.124.159, remote= 172.18.124.96,
local_proxy= 0.0.0.0/0.0.0.0/0/0 (type=4),
remote_proxy= 14.1.1.106/255.255.255.255/0/0 (type=1),
protocol= ESP, transform= esp-aes 256 esp-sha-hmac ,
lifedur= 0s and 0kb,
spi= 0x0(0), conn_id= 0, keysize= 256, flags= 0x2
IPSEC(validate_proposal_request): proposal part #2,
(key eng. msg.) INBOUND local= 172.18.124.159, remote= 172.18.124.96,
local_proxy= 0.0.0.0/0.0.0.0/0/0 (type=4),
remote_proxy= 14.1.1.106/255.255.255.255/0/0 (type=1),
protocol= PCP, transform= comp-lzs ,
lifedur= 0s and 0kb,
spi= 0x0(0), conn_id= 0, keysize= 0, flags= 0x2
IPSEC(kei_proxy): head = clientmap, map->ivrf = , kei->ivrf =
IPSEC(validate_transform_proposal): transform proposal
not supported for identity:
{esp-aes 256 esp-sha-hmac comp-lzs }
ISAKMP (0:1): IPsec policy invalidated proposal
ISAKMP (0:1): Checking IPsec proposal 3
ISAKMP: transform 1, ESP_AES
ISAKMP: attributes in transform:
ISAKMP: authenticator is HMAC-MD5
ISAKMP: encaps is 1
ISAKMP: key length is 128
ISAKMP: SA life type in seconds
ISAKMP: SA life duration (VPI) of 0x0 0x20 0xC4 0x9B
ISAKMP (0:1): atts are acceptable.
ISAKMP (0:1): Checking IPsec proposal 3
ISAKMP (0:1): transform 1, IPPCP LZS
ISAKMP: attributes in transform:
ISAKMP: encaps is 1
ISAKMP: SA life type in seconds
ISAKMP: SA life duration (VPI) of 0x0 0x20 0xC4 0x9B
ISAKMP (0:1): atts are acceptable.
IPSEC(validate_proposal_request): proposal part #1,
(key eng. msg.) INBOUND local= 172.18.124.159, remote= 172.18.124.96,
local_proxy= 0.0.0.0/0.0.0.0/0/0 (type=4),
remote_proxy= 14.1.1.106/255.255.255.255/0/0 (type=1),
protocol= ESP, transform= esp-aes esp-md5-hmac ,
lifedur= 0s and 0kb,
spi= 0x0(0), conn_id= 0, keysize= 128, flags= 0x2
IPSEC(validate_proposal_request): proposal part #2,
(key eng. msg.) INBOUND local= 172.18.124.159, remote= 172.18.124.96,
local_proxy= 0.0.0.0/0.0.0.0/0/0 (type=4),
remote_proxy= 14.1.1.106/255.255.255.255/0/0 (type=1),
protocol= PCP, transform= comp-lzs ,
lifedur= 0s and 0kb,
spi= 0x0(0), conn_id= 0, keysize= 0, flags= 0x2
IPSEC(kei_proxy): head = clientmap, map->ivrf = , kei->ivrf =
IPSEC(validate_transform_proposal): transform proposal
not supported for identity:
{esp-aes esp-md5-hmac comp-lzs }
ISAKMP (0:1): IPsec policy invalidated proposal
ISAKMP (0:1): Checking IPsec proposal 4
ISAKMP: transform 1, ESP_AES
ISAKMP: attributes in transform:
ISAKMP: authenticator is HMAC-SHA
ISAKMP: encaps is 1
```

```
ISAKMP: key length is 128
ISAKMP: SA life type in seconds
ISAKMP: SA life duration (VPI) of 0x0 0x20 0xC4 0x9B
ISAKMP (0:1): atts are acceptable.
ISAKMP (0:1): Checking IPSec proposal 4
ISAKMP (0:1): transform 1, IPPCP LZS
ISAKMP: attributes in transform:
ISAKMP: encaps is 1
ISAKMP: SA life type in seconds
ISAKMP: SA life duration (VPI) of 0x0 0x20 0xC4 0x9B
ISAKMP (0:1): atts are acceptable.
IPSEC(validate_proposal_request): proposal part #1,
(key eng. msg.) INBOUND local= 172.18.124.159, remote= 172.18.124.96,
local_proxy= 0.0.0.0/0.0.0.0/0/0 (type=4),
remote_proxy= 14.1.1.106/255.255.255.255/0/0 (type=1),
protocol= ESP, transform= esp-aes esp-sha-hmac ,
lifedur= 0s and 0kb,
spi= 0x0(0), conn_id= 0, keysize= 128, flags= 0x2
IPSEC(validate_proposal_request): proposal part #2,
(key eng. msg.) INBOUND local= 172.18.124.159, remote= 172.18.124.96,
local_proxy= 0.0.0.0/0.0.0.0/0/0 (type=4),
remote_proxy= 14.1.1.106/255.255.255.255/0/0 (type=1),
protocol= PCP, transform= comp-lzs ,
lifedur= 0s and 0kb,
spi= 0x0(0), conn_id= 0, keysize= 0, flags= 0x2
IPSEC(kei_proxy): head = clientmap, map->ivrf = , kei->ivrf =
IPSEC(validate_transform_proposal): transform proposal
    not supported for identity:
    {esp-aes esp-sha-hmac comp-lzs }
ISAKMP (0:1): IPSec policy invalidated proposal
ISAKMP (0:1): Checking IPSec proposal 5
ISAKMP: transform 1, ESP_AES
ISAKMP: attributes in transform:
ISAKMP: authenticator is HMAC-MD5
ISAKMP: encaps is 1
ISAKMP: key length is 256
ISAKMP: SA life type in seconds
ISAKMP: SA life duration (VPI) of 0x0 0x20 0xC4 0x9B
ISAKMP (0:1): processing ID payload. message ID = -1171731793
ISAKMP (0:1): processing ID payload. message ID = -1171731793
ISAKMP (0:1): asking for 1 spis from ipsec
ISAKMP (0:1): Node -1171731793, Input = IKE_MSG_FROM_PEER,
    IKE_QM_EXCH
ISAKMP (0:1): Old State = IKE_QM_READY
    New State = IKE_QM_SPI_STARVE
IPSEC(key_engine): got a queue event...
IPSEC(spi_response): getting spi 3756150268 for SA
from 172.18.124.159 to 172.18.124.96 for prot 3
IPSEC(key_engine): got a queue event...
IPSEC(spi_response): getting spi 2229862856 for SA
from 172.18.124.159 to 172.18.124.96 for prot 3
ISAKMP: received ke message (2/1)
ISAKMP: received ke message (2/1)
ISAKMP (0:1): sending packet to 172.18.124.96 my_port 500
    peer_port 500 (R) QM_IDLE
ISAKMP (0:1): Node -1836135476, Input = IKE_MSG_FROM_IPSEC,
    IKE_SPI_REPLY
ISAKMP (0:1): Old State = IKE_QM_SPI_STARVE
    New State = IKE_QM_R_QM2
ISAKMP (0:1): received packet from 172.18.124.96 dport 500
    sport 500 Global (R) QM_IDLE
ISAKMP: Locking peer struct 0x63B2EAE4,
    IPSEC refcount 1 for for stuff_ke
ISAKMP (0:1): Creating IPSec SAs
inbound SA from 172.18.124.96 to 172.18.124.159 (f/i) 0/ 0
(proxy 14.1.1.106 to 172.18.124.159)
```

```

has spi 0xDFE24DFC and conn_id 2000 and flags 2
lifetime of 2147483 seconds
has client flags 0x0
ISAKMP (0:1): Old State = IKE_QM_SPI_STARVE
    New State = IKE_QM_R_QM2
ISAKMP (0:1): received packet from 172.18.124.96 dport 500
    sport 500 Global (R) QM_IDLE
ISAKMP: Locking peer struct 0x63B2EAE4,
    IPSEC refcount 2 for for stuff_ke
ISAKMP (0:1): Creating IPSec SAs
inbound SA from 172.18.124.96 to 172.18.124.159 (f/i) 0/ 0
(proxy 14.1.1.106 to 0.0.0.0)
has spi 0x84E901C8 and conn_id 2002 and flags 2
lifetime of 2147483 seconds
has client flags 0x0
outbound SA from 172.18.124.159 to 172.18.124.96 (f/i) 0/ 0
(proxy 0.0.0.0 to 14.1.1.106 )
has spi -802758470 and conn_id 2003 and flags A
IPSEC(add mtree): src 0.0.0.0, dest 14.1.1.106, dest_port 0
IPSEC(create_sa): sa created,
(sa) sa_dest= 172.18.124.159, sa_prot= 50,
sa_spi= 0x84E901C8(2229862856),
sa_trans= esp-3des esp-md5-hmac , sa_conn_id= 2002
IPSEC(create_sa): sa created,
(sa) sa_dest= 172.18.124.96, sa_prot= 50,
sa_spi= 0xD026E0BA(3492208826),
sa_trans= esp-3des esp-md5-hmac , sa_conn_id= 2003
ISAKMP (0:1): received packet from 172.18.124.96 dport 500
    sport 500 Global (R) QM_IDLE
ISAKMP: set new node 839140381 to QM_IDLE
ISAKMP (0:1): processing HASH payload. message ID = 839140381
ISAKMP (0:1): processing NOTIFY R_U_THERE protocol 1
spi 0, message ID = 839140381, sa = 63972310
ISAKMP (0:1): deleting node 839140381 error FALSE
    reason "informational (in) state 1"
ISAKMP (0:1): Input = IKE_MSG_FROM_PEER, IKE_INFO_NOTIFY
ISAKMP (0:1): Old State = IKE_P1_COMPLETE
    New State = IKE_P1_COMPLETE
ISAKMP (0:1): DPD/R_U_THERE received from peer 172.18.124.96,
    sequence 0xA5A4632A
ISAKMP: set new node 760238809 to QM_IDLE
ISAKMP (0:1): sending packet to 172.18.124.96 my_port 500
    peer_port 500 (R) QM_IDLE
ISAKMP (0:1): purging node 760238809
ISAKMP (0:1): Input = IKE_MSG_FROM_PEER,
    IKE_MSG_KEEP_ALIVE
ISAKMP (0:1): Old State = IKE_P1_COMPLETE
    New State = IKE_P1_COMPLETE
ISAKMP (0:1): purging node 188739171
ISAKMP (0:1): purging node -1836135476
ISAKMP (0:1): purging node -1171731793
3640#

```

Client Logs

To view the logs, launch LogViewer on the VPN Client, and make sure that the filter is set to High for all the configured classes. Sample log output is shown below.

```

1      10:24:17.492  02/26/02  Sev=Info/6      DIALER/0x63300002
Initiating connection.

2      10:24:17.492  02/26/02  Sev=Info/4      CM/0x63100002
Begin connection process

3      10:24:17.512  02/26/02  Sev=Info/4      CM/0x63100004

```

Establish secure connection using Ethernet

```
4      10:24:17.512 02/26/02 Sev=Info/4      CM/0x63100026
Attempt connection with server "172.18.124.159"

5      10:24:17.512 02/26/02 Sev=Info/6      IKE/0x6300003B
Attempting to establish a connection with 172.18.124.159.

6      10:24:17.562 02/26/02 Sev=Info/4      IKE/0x63000013
SENDING >>> ISAKMP OAK AG (SA, KE, NON, ID, VID, VID, VID)
to 172.18.124.159

7      10:24:17.962 02/26/02 Sev=Info/4      IPSEC/0x63700014
Deleted all keys

8      10:24:18.223 02/26/02 Sev=Info/5      IKE/0x6300002F
Received ISAKMP packet: peer = 172.18.124.159

9      10:24:18.223 02/26/02 Sev=Info/4      IKE/0x63000014
RECEIVING <<< ISAKMP OAK AG (SA, VID, VID, VID, VID, KE,
ID, NON, HASH) from$

10     10:24:18.223 02/26/02 Sev=Info/5      IKE/0x63000059
Vendor ID payload = 12F5F28C457168A9702D9FE274CC0100

11     10:24:18.223 02/26/02 Sev=Info/5      IKE/0x63000001
Peer is a Cisco-Unity compliant peer

12     10:24:18.223 02/26/02 Sev=Info/5      IKE/0x63000059
Vendor ID payload = AFCAD71368A1F1C96B8696FC77570100

13     10:24:18.223 02/26/02 Sev=Info/5      IKE/0x63000001
Peer supports DPD

14     10:24:18.223 02/26/02 Sev=Info/5      IKE/0x63000059
Vendor ID payload = 4C72E0B594C3C20DFCB7F4419CCEB0BE

15     10:24:18.223 02/26/02 Sev=Info/5      IKE/0x63000059
Vendor ID payload = 09002689DFD6B712

16     10:24:18.263 02/26/02 Sev=Info/4      IKE/0x63000013
SENDING >>> ISAKMP OAK AG *(HASH, NOTIFY:STATUS_INITIAL_CONTACT)
to 172.18.1$

17     10:24:18.283 02/26/02 Sev=Info/5      IKE/0x6300002F
Received ISAKMP packet: peer = 172.18.124.159

18     10:24:18.283 02/26/02 Sev=Info/4      IKE/0x63000014
RECEIVING <<< ISAKMP OAK INFO *(HASH, NOTIFY:STATUS_RESP_LIFETIME)
from 172.$

19     10:24:18.283 02/26/02 Sev=Info/5      IKE/0x63000044
RESPONDER-LIFETIME notify has value of 86400 seconds

20     10:24:18.283 02/26/02 Sev=Info/5      IKE/0x63000046
This SA has already been alive for 1 seconds, setting expiry to 86399 seconds$

21     10:24:18.303 02/26/02 Sev=Info/5      IKE/0x6300002F
Received ISAKMP packet: peer = 172.18.124.159

22     10:24:18.303 02/26/02 Sev=Info/4      IKE/0x63000014
RECEIVING <<< ISAKMP OAK TRANS *(HASH, ATTR) from 172.18.124.159

23     10:24:18.303 02/26/02 Sev=Info/4      CM/0x63100015
Launch xAuth application
```

24 10:24:20.546 02/26/02 Sev=Info/4 CM/0x63100017
xAuth application returned

25 10:24:20.546 02/26/02 Sev=Info/4 IKE/0x63000013
SENDING >>> ISAKMP OAK TRANS *(HASH, ATTR) to 172.18.124.159

26 10:24:20.566 02/26/02 Sev=Info/5 IKE/0x6300002F
Received ISAKMP packet: peer = 172.18.124.159

27 10:24:20.566 02/26/02 Sev=Info/4 IKE/0x63000014
RECEIVING <<< ISAKMP OAK TRANS *(HASH, ATTR) from 172.18.124.159

28 10:24:20.566 02/26/02 Sev=Info/4 CM/0x6310000E
Established Phase 1 SA. 1 Phase 1 SA in the system

29 10:24:20.576 02/26/02 Sev=Info/4 IKE/0x63000013
SENDING >>> ISAKMP OAK TRANS *(HASH, ATTR) to 172.18.124.159

30 10:24:20.586 02/26/02 Sev=Info/4 IKE/0x63000013
SENDING >>> ISAKMP OAK TRANS *(HASH, ATTR) to 172.18.124.159

31 10:24:20.636 02/26/02 Sev=Info/5 IKE/0x6300002F
Received ISAKMP packet: peer = 172.18.124.159

32 10:24:20.636 02/26/02 Sev=Info/4 IKE/0x63000014
RECEIVING <<< ISAKMP OAK TRANS *(HASH, ATTR) from 172.18.124.159

33 10:24:20.636 02/26/02 Sev=Info/5 IKE/0x63000010
MODE_CFG_REPLY: Attribute = INTERNAL_IPV4_ADDRESS: , value = 14.1.1.102

34 10:24:20.636 02/26/02 Sev=Info/5 IKE/0x63000010
MODE_CFG_REPLY: Attribute = INTERNAL_IPV4_DNS(1): , value = 14.38.100.10

35 10:24:20.636 02/26/02 Sev=Info/5 IKE/0x63000010
MODE_CFG_REPLY: Attribute = INTERNAL_IPV4_NBNS(1) (a.k.a. WINS) : , value = \$

36 10:24:20.636 02/26/02 Sev=Info/5 IKE/0xA3000017
MODE_CFG_REPLY: The received (INTERNAL_ADDRESS_EXPIRY) attribute and value (\$

37 10:24:20.636 02/26/02 Sev=Info/5 IKE/0x6300000E
MODE_CFG_REPLY: Attribute = APPLICATION_VERSION, value = Cisco Internetwork \$
IOS (tm) C2600 Software (C2600-JK9O3S-M), Version 12.2(8)T, RELEASE SOFTWARE \$
TAC Support: <http://www.cisco.com/tac>
Copyright (c) 1986-2002 by cisco Systems, Inc.
Compiled Thu 14-Feb-02 16:50 by ccai

38 10:24:20.636 02/26/02 Sev=Info/5 IKE/0x6300000E
MODE_CFG_REPLY: Attribute = MODECFG_UNITY_DEFDOMAIN: , value = cisco.com

39 10:24:20.646 02/26/02 Sev=Info/4 CM/0x63100019
Mode Config data received

40 10:24:20.676 02/26/02 Sev=Info/5 IKE/0x63000055
Received a key request from Driver for IP address 172.18.124.159, GW IP = 17\$

41 10:24:20.676 02/26/02 Sev=Info/4 IKE/0x63000013
SENDING >>> ISAKMP OAK QM *(HASH, SA, NON, ID, ID) to 172.18.124.159

42 10:24:20.676 02/26/02 Sev=Info/5 IKE/0x63000055
Received a key request from Driver for IP address 10.10.10.255, GW IP = 172.\$

43 10:24:20.676 02/26/02 Sev=Info/4 IKE/0x63000013
SENDING >>> ISAKMP OAK QM *(HASH, SA, NON, ID, ID) to 172.18.124.159

44 10:24:20.967 02/26/02 Sev=Info/4 IPSEC/0x63700014
Deleted all keys

45 10:24:20.987 02/26/02 Sev=Info/5 IKE/0x6300002F
Received ISAKMP packet: peer = 172.18.124.159

46 10:24:20.987 02/26/02 Sev=Info/4 IKE/0x63000014
RECEIVING <<< ISAKMP OAK QM *(HASH, SA, NON, ID,
ID, NOTIFY:STATUS_RESP_LIFE\$

47 10:24:20.987 02/26/02 Sev=Info/5 IKE/0x63000044
RESPONDER-LIFETIME notify has value of 3600 seconds

48 10:24:20.987 02/26/02 Sev=Info/5 IKE/0x63000045
RESPONDER-LIFETIME notify has value of 4608000 kb

49 10:24:20.987 02/26/02 Sev=Info/4 IKE/0x63000013
SENDING >>> ISAKMP OAK QM *(HASH) to 172.18.124.159

50 10:24:20.987 02/26/02 Sev=Info/5 IKE/0x63000058
Loading IPsec SA (Message ID = 0x49D93B33 OUTBOUND SPI = 0x4637A127 INBOUND \$

51 10:24:20.987 02/26/02 Sev=Info/5 IKE/0x63000025
Loaded OUTBOUND ESP SPI: 0x4637A127

52 10:24:20.987 02/26/02 Sev=Info/5 IKE/0x63000026
Loaded INBOUND ESP SPI: 0xCE633EA8

53 10:24:20.987 02/26/02 Sev=Info/4 CM/0x6310001A
One secure connection established

54 10:24:21.017 02/26/02 Sev=Info/6 DIALER/0x63300003
Connection established.

55 10:24:21.357 02/26/02 Sev=Info/6 DIALER/0x63300008
MAPI32 Information - Outlook not default mail client

56 10:24:21.617 02/26/02 Sev=Info/5 IKE/0x6300002F
Received ISAKMP packet: peer = 172.18.124.159

57 10:24:21.617 02/26/02 Sev=Info/4 IKE/0x63000014
RECEIVING <<< ISAKMP OAK QM *(HASH, SA, NON, ID,
ID, NOTIFY:STATUS_RESP_LIFE\$

58 10:24:21.617 02/26/02 Sev=Info/5 IKE/0x63000044
RESPONDER-LIFETIME notify has value of 3600 seconds

59 10:24:21.617 02/26/02 Sev=Info/5 IKE/0x63000045
RESPONDER-LIFETIME notify has value of 4608000 kb

60 10:24:21.617 02/26/02 Sev=Info/4 IKE/0x63000013
SENDING >>> ISAKMP OAK QM *(HASH) to 172.18.124.159

61 10:24:21.617 02/26/02 Sev=Info/5 IKE/0x63000058
Loading IPsec SA (Message ID = 0x41AC9838 OUTBOUND SPI = 0x287931C6 INBOUND \$

62 10:24:21.617 02/26/02 Sev=Info/5 IKE/0x63000025
Loaded OUTBOUND ESP SPI: 0x287931C6

63 10:24:21.617 02/26/02 Sev=Info/5 IKE/0x63000026
Loaded INBOUND ESP SPI: 0x26EC8782

64 10:24:21.617 02/26/02 Sev=Info/4 CM/0x63100022
Additional Phase 2 SA established.

65 10:24:21.617 02/26/02 Sev=Info/5 IKE/0x63000055
Received a key request from Driver for IP address 14.38.100.10, GW IP = 172.\$

66 10:24:21.617 02/26/02 Sev=Info/4 IKE/0x63000013
SENDING >>> ISAKMP OAK QM *(HASH, SA, NON, ID, ID) to 172.18.124.159

67 10:24:21.948 02/26/02 Sev=Info/5 IKE/0x6300002F
Received ISAKMP packet: peer = 172.18.124.159

68 10:24:21.948 02/26/02 Sev=Info/4 IKE/0x63000014
RECEIVING <<< ISAKMP OAK QM *(HASH, SA, NON, ID,
ID, NOTIFY:STATUS_RESP_LIFE\$

69 10:24:21.948 02/26/02 Sev=Info/5 IKE/0x63000044
RESPONDER-LIFETIME notify has value of 3600 seconds

70 10:24:21.948 02/26/02 Sev=Info/5 IKE/0x63000045
RESPONDER-LIFETIME notify has value of 4608000 kb

71 10:24:21.948 02/26/02 Sev=Info/4 IKE/0x63000013
SENDING >>> ISAKMP OAK QM *(HASH) to 172.18.124.159

72 10:24:21.948 02/26/02 Sev=Info/5 IKE/0x63000058
Loading IPsec SA (Message ID = 0xCDC476F0 OUTBOUND SPI = 0xFDE4BA9C INBOUND \$

73 10:24:21.948 02/26/02 Sev=Info/5 IKE/0x63000025
Loaded OUTBOUND ESP SPI: 0xFDE4BA9C

74 10:24:21.948 02/26/02 Sev=Info/5 IKE/0x63000026
Loaded INBOUND ESP SPI: 0xDEA46284

75 10:24:21.948 02/26/02 Sev=Info/4 CM/0x63100022
Additional Phase 2 SA established.

76 10:24:22.248 02/26/02 Sev=Info/4 IPSEC/0x63700010
Created a new key structure

77 10:24:22.248 02/26/02 Sev=Info/4 IPSEC/0x6370000F
Added key with SPI=0x27a13746 into key list

78 10:24:22.248 02/26/02 Sev=Info/4 IPSEC/0x63700010
Created a new key structure

79 10:24:22.248 02/26/02 Sev=Info/4 IPSEC/0x6370000F
Added key with SPI=0xa83e63ce into key list

80 10:24:22.248 02/26/02 Sev=Info/4 IPSEC/0x63700010

81 10:24:22.248 02/26/02 Sev=Info/4 IPSEC/0x6370000F
Added key with SPI=0xc6317928 into key list

82 10:24:22.248 02/26/02 Sev=Info/4 IPSEC/0x63700010
Created a new key structure

83 10:24:22.248 02/26/02 Sev=Info/4 IPSEC/0x6370000F
Added key with SPI=0x8287ec26 into key list

84 10:24:22.248 02/26/02 Sev=Info/4 IPSEC/0x63700010
Created a new key structure

85 10:24:22.248 02/26/02 Sev=Info/4 IPSEC/0x6370000F
Added key with SPI=0x9cbae4fd into key list

86 10:24:22.248 02/26/02 Sev=Info/4 IPSEC/0x63700010
Created a new key structure

87 10:24:22.248 02/26/02 Sev=Info/4 IPSEC/0x6370000F
Added key with SPI=0x8462a4de into key list

Related Information

- [Cisco VPN 3000 Concentrator Support Pages](#)
 - [Cisco VPN 3000 Client Support Pages](#)
 - [IP Security \(IPSec\) Product Support Pages](#)
 - [Technical Support – Cisco Systems](#)
-

[Contacts & Feedback](#) | [Help](#) | [Site Map](#)

© 2008 – 2009 Cisco Systems, Inc. All rights reserved. [Terms & Conditions](#) | [Privacy Statement](#) | [Cookie Policy](#) | [Trademarks of Cisco Systems, Inc.](#)

Updated: May 03, 2004

Document ID: 20621
